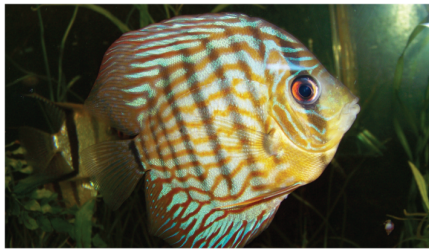


LOW RISK SPECIES



By miranom, CC BY-SA 3.0, <https://commons.wikimedia.org/w/index.php?curid=53233846>

Blue Discus

Symphysodon aequifasciatus

TAKE ACTION

- Research your pet's size and behavior to determine the appropriate enclosure.
- Invest in a habitat that is secure and sturdy to minimize the chance of escape.

DO NOT RELEASE!

It is illegal to introduce non-native aquatic plants and animals into state waters.



More Information

LOW RISK SPECIES



By Pia Helminen - Own work, CC BY 2.5, <https://commons.wikimedia.org/w/index.php?curid=1740833>

Bolivian Ram

Mikrogeophagus altispinosa

TAKE ACTION

- Research your pet's size and behavior to determine the appropriate enclosure.
- Invest in a habitat that is secure and sturdy to minimize the chance of escape.

DO NOT RELEASE!

It is illegal to introduce non-native aquatic plants and animals into state waters.



More Information

LOW RISK



Blue Discus

Symphysodon aequifasciatus



DO NOT RELEASE!

It is illegal to introduce non-native aquatic plants and animals into state waters.

LOW RISK



Bolivian Ram

Mikrogeophagus altispinosa



DO NOT RELEASE!

It is illegal to introduce non-native aquatic plants and animals into state waters.

Fish

LOW RISK SPECIES



Public Domain, <https://commons.wikimedia.org/w/index.php?curid=3254295>

Bronze Corydoras

Corydoras aeneus

TAKE ACTION

- Research your pet's size and behavior to determine the appropriate enclosure.
- Invest in a habitat that is secure and sturdy to minimize the chance of escape.

DO NOT RELEASE!

It is illegal to introduce non-native aquatic plants and animals into state waters.



More Information

LOW RISK SPECIES



CC BY-SA 3.0, <https://commons.wikimedia.org/w/index.php?curid=31185>

Cherry Barb

Puntius titteya

TAKE ACTION

- Research your pet's size and behavior to determine the appropriate enclosure.
- Invest in a habitat that is secure and sturdy to minimize the chance of escape.

DO NOT RELEASE!

It is illegal to introduce non-native aquatic plants and animals into state waters.



More Information

LOW RISK



Bronze Corydoras

Corydoras aeneus



DO NOT RELEASE!

It is illegal to introduce non-native aquatic plants and animals into state waters.

LOW RISK



Cherry Barb

Puntius titteya



DO NOT RELEASE!

It is illegal to introduce non-native aquatic plants and animals into state waters.

LOW RISK SPECIES



By Przemek Pietrak - <https://globalquiz.org/ru/amphiprion-ocellaris/>, CC BY-SA 3.0, <https://commons.wikimedia.org/w/index.php?curid=70142933>

Clown Anemonefish

Amphiprion ocellaris

TAKE ACTION

- Research your pet's size and behavior to determine the appropriate enclosure.
- Invest in a habitat that is secure and sturdy to minimize the chance of escape.

DO NOT RELEASE!

It is illegal to introduce non-native aquatic plants and animals into state waters.



More Information

LOW RISK SPECIES



CC BY-SA 3.0, <https://en.wikipedia.org/w/index.php?curid=8802637>

Coolie Loach

Pangio kuhlii

TAKE ACTION

- Research your pet's size and behavior to determine the appropriate enclosure.
- Invest in a habitat that is secure and sturdy to minimize the chance of escape.

DO NOT RELEASE!

It is illegal to introduce non-native aquatic plants and animals into state waters.



More Information

LOW RISK



Clown Anemonefish

Amphiprion ocellaris



DO NOT RELEASE!

It is illegal to introduce non-native aquatic plants and animals into state waters.

LOW RISK



Coolie Loach

Pangio kuhlii



DO NOT RELEASE!

It is illegal to introduce non-native aquatic plants and animals into state waters.

LOW RISK SPECIES



By Bcs4ever - Own work, CC BY-SA 3.0, <https://commons.wikimedia.org/w/index.php?curid=2718526>



Eastern Rainbowfish

Melanotaenia splendida

TAKE ACTION

- Research your pet's size and behavior to determine the appropriate enclosure.
- Invest in a habitat that is secure and sturdy to minimize the chance of escape.

DO NOT RELEASE!

It is illegal to introduce non-native aquatic plants and animals into state waters.



More Information

LOW RISK SPECIES



By © Citron, CC BY-SA 3.0, <https://commons.wikimedia.org/w/index.php?curid=31199216>



Freshwater Angelfish

Pterophyllum scalare

TAKE ACTION

- Research your pet's size and behavior to determine the appropriate enclosure.
- Invest in a habitat that is secure and sturdy to minimize the chance of escape.

DO NOT RELEASE!

It is illegal to introduce non-native aquatic plants and animals into state waters.



More Information

LOW RISK



Eastern Rainbowfish

Melanotaenia splendida



DO NOT RELEASE!

It is illegal to introduce non-native aquatic plants and animals into state waters.

LOW RISK



Freshwater Angelfish

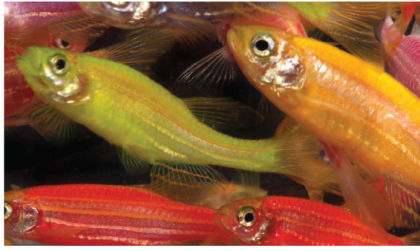
Pterophyllum scalare



DO NOT RELEASE!

It is illegal to introduce non-native aquatic plants and animals into state waters.

LOW RISK SPECIES



*Glofish™ by Carolina Biological Supply Company,
<https://openverse.org/image/3428470-47c8-4866-845d-f4c734172d34?q=glofish.%20%20March%2014.%202023>.

LOW RISK SPECIES



By Citron - Own work, CC BY-SA 3.0, <https://commons.wikimedia.org/w/index.php?curid=14915752>

GloFish (Zebra Danio)

Danio rerio

TAKE ACTION

- Research your pet's size and behavior to determine the appropriate enclosure.
- Invest in a habitat that is secure and sturdy to minimize the chance of escape.

DO NOT RELEASE!

It is illegal to introduce non-native aquatic plants and animals into state waters.



More Information

Green Chromis

Chromis viridis

TAKE ACTION

- Research your pet's size and behavior to determine the appropriate enclosure.
- Invest in a habitat that is secure and sturdy to minimize the chance of escape.

DO NOT RELEASE!

It is illegal to introduce non-native aquatic plants and animals into state waters.



More Information

LOW RISK



GloFish (Zebra Danio)

Danio rerio



DO NOT RELEASE!

It is illegal to introduce non-native aquatic plants and animals into state waters.

LOW RISK



Green Chromis

Chromis viridis



DO NOT RELEASE!

It is illegal to introduce non-native aquatic plants and animals into state waters.

LOW RISK SPECIES



By Marablio2 - Own work, CC BY-SA 3.0,
<https://commons.wikimedia.org/w/index.php?curid=1785530>

Guppy

Poecilia reticulata

TAKE ACTION

- Research your pet's size and behavior to determine the appropriate enclosure.
- Invest in a habitat that is secure and sturdy to minimize the chance of escape.

DO NOT RELEASE!

It is illegal to introduce non-native aquatic plants and animals into state waters.



More Information

LOW RISK SPECIES



By Roel Balingit - Own work, CC BY-SA 4.0,
<https://commons.wikimedia.org/w/index.php?curid=101167009>

Harlequin Rasbora

Trigonostigma heteromorpha

TAKE ACTION

- Research your pet's size and behavior to determine the appropriate enclosure.
- Invest in a habitat that is secure and sturdy to minimize the chance of escape.

DO NOT RELEASE!

It is illegal to introduce non-native aquatic plants and animals into state waters.



More Information

LOW RISK



Guppy

Poecilia reticulata



DO NOT RELEASE!

It is illegal to introduce non-native aquatic plants and animals into state waters.

LOW RISK



Harlequin Rasbora

Trigonostigma heteromorpha



DO NOT RELEASE!

It is illegal to introduce non-native aquatic plants and animals into state waters.

LOW RISK SPECIES



By User:Zhyia (7) - en: Image:jack dempsey.jpg, CC BY-SA 3.0, <https://commons.wikimedia.org/w/index.php?curid=1052272>



Jack Dempsey

Rocio octofasciata

TAKE ACTION

- Research your pet's size and behavior to determine the appropriate enclosure.
- Invest in a habitat that is secure and sturdy to minimize the chance of escape.

DO NOT RELEASE!

It is illegal to introduce non-native aquatic plants and animals into state waters.



More Information

LOW RISK SPECIES



By Cator - http://www.theaquariumwiki.com/File:Austrolebias_n_igripinnis992.jpg, CC BY 3.0, <https://commons.wikimedia.org/w/index.php?curid=34799840>



Killifish

Austrolebias affinis

TAKE ACTION

- Research your pet's size and behavior to determine the appropriate enclosure.
- Invest in a habitat that is secure and sturdy to minimize the chance of escape.

DO NOT RELEASE!

It is illegal to introduce non-native aquatic plants and animals into state waters.



More Information

LOW RISK



Jack Dempsey

Rocio octofasciata



DO NOT RELEASE!

It is illegal to introduce non-native aquatic plants and animals into state waters.

LOW RISK



Killifish

Austrolebias affinis



DO NOT RELEASE!

It is illegal to introduce non-native aquatic plants and animals into state waters.

LOW RISK SPECIES



By Wisky - Own work, CC BY-SA 3.0, <https://commons.wikimedia.org/w/index.php?curid=17720292>



LOW RISK SPECIES



By Hölger Krüg - Own work, CC BY 3.0, <https://commons.wikimedia.org/w/index.php?curid=26431525>



Leopard Pleco

Pterygoplichthys gibbiceps

TAKE ACTION

- Research your pet's size and behavior to determine the appropriate enclosure.
- Invest in a habitat that is secure and sturdy to minimize the chance of escape.

DO NOT RELEASE!

It is illegal to introduce non-native aquatic plants and animals into state waters.



More Information

Neon Tetra

Paracheirodon innesi

TAKE ACTION

- Research your pet's size and behavior to determine the appropriate enclosure.
- Invest in a habitat that is secure and sturdy to minimize the chance of escape.

DO NOT RELEASE!

It is illegal to introduce non-native aquatic plants and animals into state waters.



More Information

LOW RISK



Leopard Pleco

Pterygoplichthys gibbiceps



DO NOT RELEASE!

It is illegal to introduce non-native aquatic plants and animals into state waters.

LOW RISK



Neon Tetra

Paracheirodon innesi



DO NOT RELEASE!

It is illegal to introduce non-native aquatic plants and animals into state waters.

LOW RISK SPECIES



By CrisRise - Own work, CC BY-SA 3.0, <https://commons.wikimedia.org/w/index.php?curid=19263086>

Orange Clownfish

Amphiprion percula

TAKE ACTION

- Research your pet's size and behavior to determine the appropriate enclosure.
- Invest in a habitat that is secure and sturdy to minimize the chance of escape.

DO NOT RELEASE!

It is illegal to introduce non-native aquatic plants and animals into state waters.



More Information

LOW RISK SPECIES



By Xén Helgi Jónsson (Amything) - Own work, CC BY-SA 3.0, <https://commons.wikimedia.org/w/index.php?curid=797620>

Oscar

Astronotus ocellatus

TAKE ACTION

- Research your pet's size and behavior to determine the appropriate enclosure.
- Invest in a habitat that is secure and sturdy to minimize the chance of escape.

DO NOT RELEASE!

It is illegal to introduce non-native aquatic plants and animals into state waters.



More Information

LOW RISK



Orange Clownfish

Amphiprion percula



DO NOT RELEASE!

It is illegal to introduce non-native aquatic plants and animals into state waters.

LOW RISK



Oscar

Astronotus ocellatus



DO NOT RELEASE!

It is illegal to introduce non-native aquatic plants and animals into state waters.

LOW RISK SPECIES



By Alexander Sieting - photo taken by Alexander Sieting, CC BY-SA 3.0, <https://commons.wikimedia.org/w/index.php?curid=754608>



Pearl Gourami

Trichopodus leerii

TAKE ACTION

- Research your pet's size and behavior to determine the appropriate enclosure.
- Invest in a habitat that is secure and sturdy to minimize the chance of escape.

DO NOT RELEASE!

It is illegal to introduce non-native aquatic plants and animals into state waters.



More Information

LOW RISK SPECIES



CC BY-SA 3.0, <https://commons.wikimedia.org/w/index.php?curid=136617040>



Rainbow Krib

Pelvicachromis pulcher

TAKE ACTION

- Research your pet's size and behavior to determine the appropriate enclosure.
- Invest in a habitat that is secure and sturdy to minimize the chance of escape.

DO NOT RELEASE!

It is illegal to introduce non-native aquatic plants and animals into state waters.



More Information

LOW RISK



Pearl Gourami

Trichopodus leerii



DO NOT RELEASE!

It is illegal to introduce non-native aquatic plants and animals into state waters.

LOW RISK



Rainbow Krib

Pelvicachromis pulcher



DO NOT RELEASE!

It is illegal to introduce non-native aquatic plants and animals into state waters.

LOW RISK SPECIES



By Gmory - Own work, Public Domain, <https://commons.wikimedia.org/w/index.php?curid=5672590>



LOW RISK SPECIES



By Daniela Vereeken - Flickr: HM Orange M - Sarawut, CC BY 2.0, <https://commons.wikimedia.org/w/index.php?curid=12683082>



Sapphire Devil

Chrysiptera cyanea

TAKE ACTION

- Research your pet's size and behavior to determine the appropriate enclosure.
- Invest in a habitat that is secure and sturdy to minimize the chance of escape.

DO NOT RELEASE!

It is illegal to introduce non-native aquatic plants and animals into state waters.



More Information

Siamese Fighting Fish

Betta splendens

TAKE ACTION

- Research your pet's size and behavior to determine the appropriate enclosure.
- Invest in a habitat that is secure and sturdy to minimize the chance of escape.

DO NOT RELEASE!

It is illegal to introduce non-native aquatic plants and animals into state waters.



More Information

LOW RISK



Sapphire Devil

Chrysiptera cyanea



DO NOT RELEASE!

It is illegal to introduce non-native aquatic plants and animals into state waters.

LOW RISK



Siamese Fighting Fish

Betta splendens



DO NOT RELEASE!

It is illegal to introduce non-native aquatic plants and animals into state waters.

LOW RISK SPECIES



By Raphaël Covain, CC BY-SA 4.0, <https://commons.wikimedia.org/w/index.php?curid=63330109>



Suckermouth Plecostomus

Hypostomus plecostomus

TAKE ACTION

- Research your pet's size and behavior to determine the appropriate enclosure.
- Invest in a habitat that is secure and sturdy to minimize the chance of escape.

DO NOT RELEASE!

It is illegal to introduce non-native aquatic plants and animals into state waters.



More Information

LOW RISK SPECIES



By Philippe Bourjon, CC BY-SA 4.0, <https://commons.wikimedia.org/w/index.php?curid=83194544>



Threespot Dascyllus

Dascyllus trimaculatus

TAKE ACTION

- Research your pet's size and behavior to determine the appropriate enclosure.
- Invest in a habitat that is secure and sturdy to minimize the chance of escape.

DO NOT RELEASE!

It is illegal to introduce non-native aquatic plants and animals into state waters.



More Information

LOW RISK



Suckermouth Pleco

Hypostomus plecostomus



DO NOT RELEASE!

It is illegal to introduce non-native aquatic plants and animals into state waters.

LOW RISK



Threespot Dascyllus

Dascyllus trimaculatus



DO NOT RELEASE!

It is illegal to introduce non-native aquatic plants and animals into state waters.

LOW RISK SPECIES



By Azal - Own work. Copyrighted free use.
<https://commons.wikimedia.org/w/index.php?curid=260841>

Zebra Danio

Danio rerio

TAKE ACTION

- Research your pet's size and behavior to determine the appropriate enclosure.
- Invest in a habitat that is secure and sturdy to minimize the chance of escape.

DO NOT RELEASE!

It is illegal to introduce non-native aquatic plants and animals into state waters.



More Information

LOW RISK



Zebra Danio

Danio rerio



DO NOT RELEASE!

It is illegal to introduce non-native aquatic plants and animals into state waters.