

# Aquatic Invasive Species Watercraft Access Analysis

## Pilot: Risk Assessments + Site Prescriptions

Bureau of Land Management Project Report: L22AS00240

Report prepared by: Zach Burnside, *Invasive Species Program Coordinator, Wildlife Forever*



# Project summary

**Wildlife Forever** is a leader in the conservation community, working to identify solutions to mitigate and prevent the spread of Aquatic Invasive Species (AIS). Through a cooperative agreement with the Bureau, Wildlife Forever performed a comprehensive Risk Assessment of watercraft accesses to determine risk levels for invasive species inbound and outbound spread on BLM and neighboring public lands. Through the risk analysis process, an assessment was also conducted to determine the availability of necessary tools and educational prompts to help watercraft users perform best management practices of Clean, Drain, and Dry. The outcomes of this project provide the agency with a site analysis, overview of threats, and a mitigation or prevention plan to address the findings and reduce the risk of AIS spread.

Beginning in FY 22, Wildlife Forever used a stakeholder driven process with site managers across the West to identify high priority public watercraft accesses. After consultation and review, twelve sites were identified for the Risk Assessment and Access Enhancement analysis. Priority was given to BLM owned or shared stewardship accesses with eight sites being directly on or adjacent to BLM lands.

During the assessments of the twelve selected sites, five common themes were identified among them.

- **AIS signage was not present**
- **AIS prevention tools and cleaning stations were not present**
- **Watercraft inspectors were not stationed**
- **AIS decontamination was not readily available (just one site had decon within a 20-minute drive)**
- **All twelve sites were within ten miles of existing AIS infestations**

Each of these themes individually adds a high degree of risk to AIS spread by overland watercraft transport. These risk factors multiply when layered together. As described in the twelve risk assessments, all sites identified in this project were evaluated as having medium- or high-risk of AIS spread due to their lack of existing mitigation strategies.

To combat these risks, the site prescriptions lay out recommendations of watercraft cleaning tools and equipment and Clean Drain Dry educational AIS signage. Signage includes general best practices, watch species, and stenciled pavement markings. Summarily, the prescriptions describe a comprehensive approach to awareness, prevention, and community outreach.

While each prevention tactic independently has value, the affect multiplies when they are combined. Integration of a broad scoped plan, incorporating physical prevention tools at the access with outreach and education throughout the community are paramount to success.

---

**Inspection and decontamination, accompanied by watercraft cleaning infrastructure and paired with a well-planned, broad scoped multimedia and social marketing campaign, closes gaps and constitutes a holistic approach to AIS prevention.**

---

These prescriptions are tailored specifically for the individual sites based on the demographics and use cases of each and may serve as a framework for future projects aimed at mitigating risk at public water accesses across the West.

*A special thank you to Matt Blocker, Jason Brey, Michelle Cox, Maria Craig, Lacy Decker, Monica Morin, Clint Sestrich, Robert Walters, and Sharmila Premdas Jepsen for supporting this important pilot project to identify gaps in AIS prevention but most importantly key solutions to the growing risk from AIS and the needs for enhanced public engagement and strategic mitigation measures to protect our public waters.*



# Table of Contents

<u>pg.</u>	<u>Site</u>	<u>Waterbody</u>	<u>Location</u>
4-5	Clarno Recreation Site	John Day River	Fossil, OR
6-7	Corn Lake Boat Launch	Colorado River	Grand Junction, CO
8-9	Grassy Point Picnic Area	Georgetown Lake	Anaconda, MT
10-11	JS Burres State Park	John Day River	Condon, OR
12-13	Kobayashi Beach	Ennis Lake	Ennis, MT
14-15	Loma Boat Launch	Colorado River	Fruita, CO
16-17	Maiden Rock Boat Ramp	Big Hole River	Divide, MT
18-19	Point of Rocks	Jefferson River	Renova, MT
20-21	Rainbow Point Boat Ramp	Hebgen Lake	West Yellowstone, MT
22-23	Service Creek Boat Launch	John Day River	Spray, OR
24-25	Whitaker Bridge	Blackfoot River	McNamara, MT
26-27	Windy Point Boat Launch	Madison River	Cameron, MT



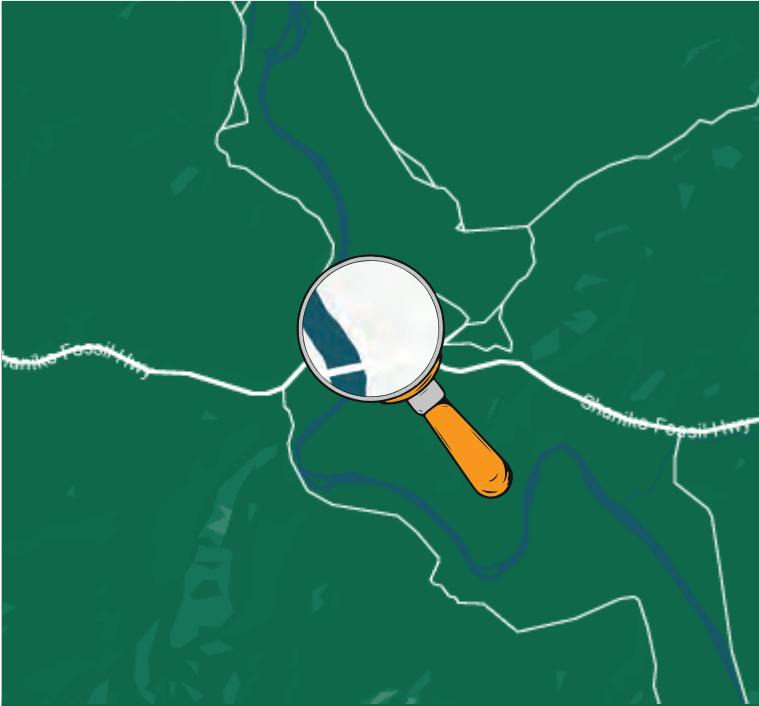
# Clarno Recreation Site

44° 54' 57.80" N, 120° 28' 9.05"

John Day River

Fossil, OR

The John Day River is a tributary of the Columbia River. Extensively used for irrigation, the river is home to salmon runs and recreational activities from rafting to angling. While the area has not had any reported aquatic infestations, Eurasian watermilfoil and Flowering rush can be found to the North in the Columbia.



**Access Ownership:** Oregon Parks & Rec Dept  
Maintained by BLM

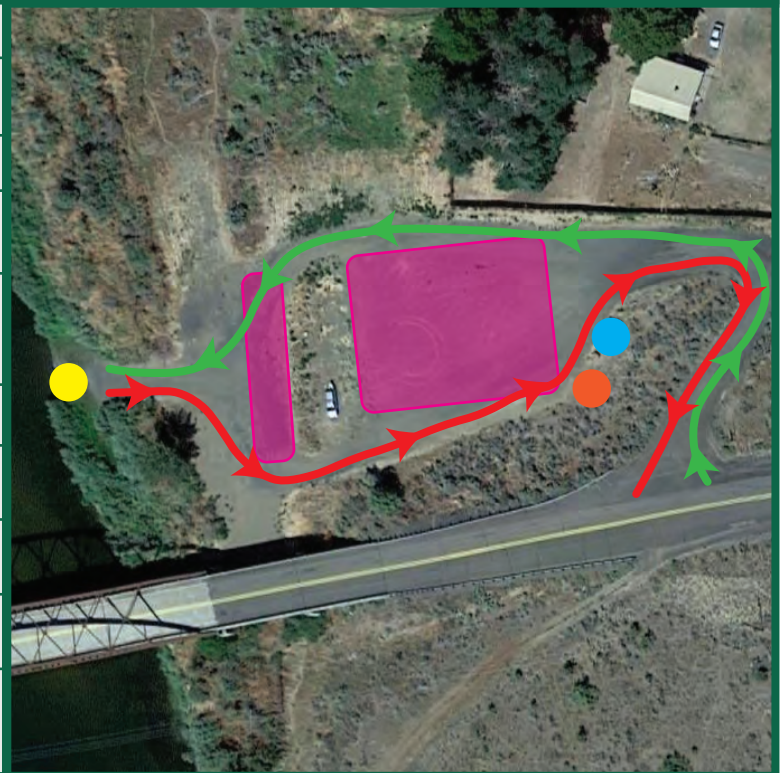


**Access Manager:** Monica Morin  
Outdoor Recreation Planner  
mmorin@blm.gov  
541-416-6718

### KEY

- = boat ramp
- = trash (seasonal)
- ← = inbound route
- = signage
- = parking
- = outbound route

	Access Checklist
Lot/ramp condition	<ul style="list-style-type: none"> <li>Gravel lot with natural ramp</li> <li>Fair condition</li> </ul>
Parking	<ul style="list-style-type: none"> <li>50 spaces</li> </ul>
Existing Infrastructure	<ul style="list-style-type: none"> <li>NO AIS prevention tools or signage</li> <li>Seasonal dumpsters &amp; Site ID signage</li> </ul>
User demographics & activities	<ul style="list-style-type: none"> <li>Whitewater boaters, driving tourists, anglers</li> <li>Broad demographics</li> </ul>
Busy season	<ul style="list-style-type: none"> <li>Memorial day through mid-July</li> </ul>
Inspector/Decon?	<ul style="list-style-type: none"> <li>None at access or surrounding areas</li> </ul>
Flood prone?	<ul style="list-style-type: none"> <li>Seasonal flooding in May</li> </ul>
Cell service/electricity?	<ul style="list-style-type: none"> <li>No cell service, no electricity</li> </ul>
Infested	<ul style="list-style-type: none"> <li>Goathead (terrestrial) present</li> <li>Threat of Eurasian watermilfoil &amp; Flowering rush found locally</li> </ul>



**John Day River is classified as: MEDIUM RISK**

**Due to**

- Lack of prevention tools & signage
- Threat of outbound spread of Goathead, inbound spread of Eurasian watermilfoil, Flowering rush.



### KEY

- = boat ramp
- = signage
- ← = inbound route
- = tools/equipment
- ▭ = parking
- ➔ = outbound route



### Access Recommendations:

#### Watercraft cleaning equipment: Inbound/Outbound

- Landing Station cleaning system:
  - MAJK Solutions
  - Clean Drain Dry (Angler) sign
  - Aqua Weed Stick
  - Extendable brush



#### Signage: Inbound/Outbound

- Install Clean Drain Dry & Educational signage at access entry
  - Risk Species: **Goathead, Eurasian watermilfoil** and **Flowering rush**
- Signage near watercraft cleaning equipment



#### Community Outreach, Prevention, & Awareness Recommendations:

##### Distribute Clean Drain Dry outreach materials

- Brushes, boat towels, brochures, decals, other Clean Drain Dry branded products are available at [CleanDrainDry.org](http://CleanDrainDry.org)
- Use watercraft inspectors or volunteer outreach at local events, fairs, bait shops, visitor centers, and retailers to educate the community and distribute outreach materials.



##### Media & Marketing

- Deploy Clean Drain Dry outreach campaign
  - Streaming ads, outdoor billboards, gas stations, social, radio, print ads
  - Targeted social media: Facebook and Instagram ads
  - Geofenced digital web and mobile device ads
    - Target users who have visited certain areas. Setting up digital fences around this access and others around it allow us to target users continually.



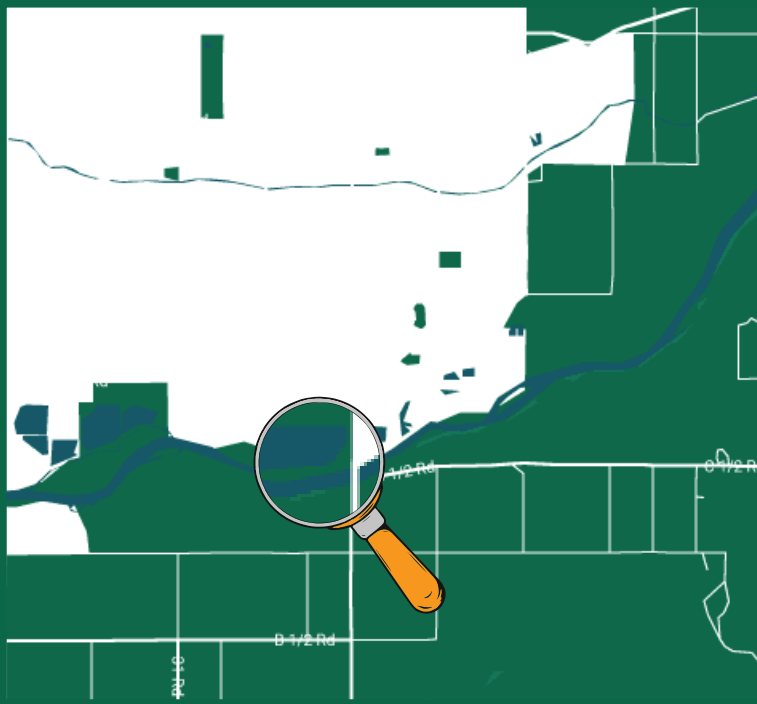
# Corn Lake Boat Launch

39° 3' 18.59" N, 108° 27' 38.19" W

Colorado River

Grand Junction, CO

The Colorado River is one of the principal rivers in the Southwestern United States, draining an expansive, arid watershed that covers parts of seven U.S. States. New Zealand mud snail are present upstream, and the threat of Flowering Rush can be found locally. Zebra mussels were recently found for the first time in Colorado.



**Access Ownership:** CO Parks & Wildlife



**Access Manager:** Robert Walters  
 Invasive Species Prgm. Mgr.  
 robert.walters@state.co.us  
 303-291-7833

**KEY**

- = boat ramp
- = trash receptacles
- ← = inbound route
- = signage
- = parking
- = outbound route

	<b>Access Checklist</b>
<b>Lot/ramp condition</b>	<ul style="list-style-type: none"> <li>Asphalt ramp, gravel ramp</li> <li>Good condition</li> </ul>
<b>Parking</b>	<ul style="list-style-type: none"> <li>33 spaces, 2 handicap</li> </ul>
<b>Existing Infrastructure</b>	<ul style="list-style-type: none"> <li>Visitor center</li> <li>Restrooms</li> <li>Trash</li> <li>NO AIS tools/signage</li> </ul>
<b>User demographics &amp; activities</b>	<ul style="list-style-type: none"> <li>Non-motorized rafters</li> <li>Shoreline anglers</li> <li>18-25, white</li> </ul>
<b>Busy season</b>	<ul style="list-style-type: none"> <li>May thru Aug</li> </ul>
<b>Inspector/Decon?</b>	<ul style="list-style-type: none"> <li>Decontamination station at CO P&amp;W Regional office, 8.5 mile/17 minute drive</li> </ul>
<b>Flood prone?</b>	<ul style="list-style-type: none"> <li>No</li> </ul>
<b>Cell service/electricity?</b>	<ul style="list-style-type: none"> <li>Cell service, no electricity</li> </ul>
<b>Infested</b>	<ul style="list-style-type: none"> <li>New Zealand mud snail present upstream</li> <li>Threat of Flowering rush found locally</li> </ul>



**Colorado River is classified as: MEDIUM RISK**

- Due to**
- Lack of prevention tools & signage at access, decon station 17 minute drive from access.
  - Threat of outbound spread of New Zealand mud snail, inbound spread of Flowering rush, Zebra mussels.



### KEY

- = boat ramp
- = signage
- ← = inbound route
- = tools/equipment
- = parking
- = outbound route



### Access Recommendations:

#### Watercraft cleaning equipment: Inbound/Outbound

- Solar powered Wayside cleaning station: CD3 systems
  - Clean Drain Dry wrap
  - Stop Invasive Species wrap
  - Everyone Likes a Clean Boat wrap
- Landing Station cleaning system: MAJK Solutions
  - Clean Drain Dry (Angler) sign
  - 4' Aqua Weed Stick
  - 4' boat Brush

#### Signage: Inbound/Outbound

- Install Clean Drain Dry & educational signage at access
  - Risk Species: **New Zealand mud snail, Flowering rush, and Quagga/Zebra mussels**
- Signage near ramp directing users to watercraft cleaning equipment

### Community Outreach, Prevention, & Awareness Recommendations:

#### Distribute Clean Drain Dry outreach materials

- Brushes, boat towels, brochures, decals, other Clean Drain Dry branded products are available at [CleanDrainDry.org](http://CleanDrainDry.org)
- Use watercraft inspectors or volunteer outreach at local events, fairs, bait shops, visitor centers, and retailers to educate the community and distribute outreach materials.

#### Media & Marketing

- Deploy Clean Drain Dry outreach campaign
  - Streaming ads, outdoor billboards, gas stations, social, radio, print ads
  - Targeted social media: Facebook and Instagram ads
  - Geofenced digital web and mobile device ads
    - Target users who have visited certain areas. Setting up digital fences around this access and others around it allow us to target users continually.



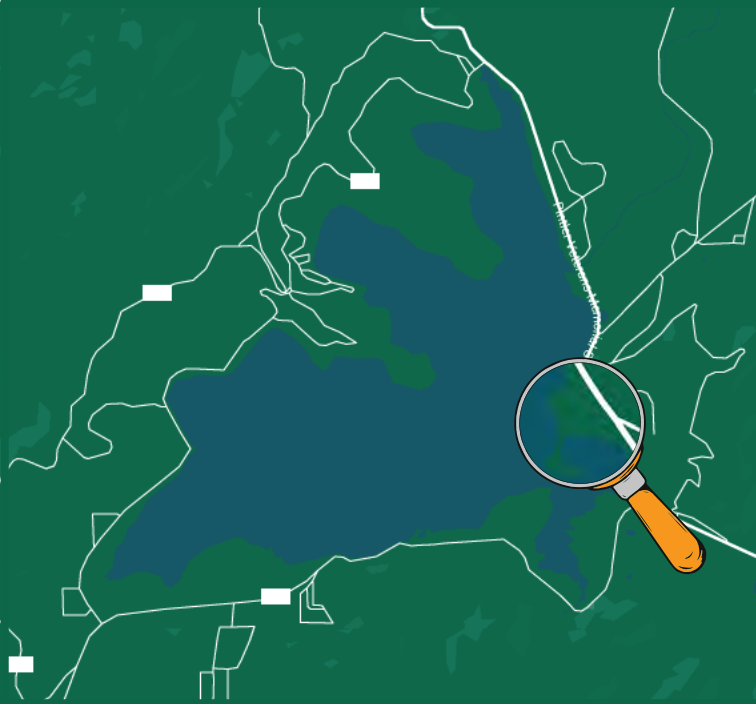
# Grassy Point Picnic Area

46° 10' 58.35" N, 113° 16' 1.59" W

Georgetown Lake

Anaconda, MT

Georgetown Lake is a heavily trafficked water body with six developed accesses. The lake faces a current infestation of Faucet Snail and nearby threats of Curly-leaf pondweed, New Zealand mud snail, and Parrotfeather. The access is located in a particularly weedy area and is the largest access on the lake.



**Access Ownership:** USFS

**Other stakeholders:** N/A

**Access Manager:** Patrick Saffel  
Region 2 Fish Manager  
psaffel@mt.gov  
406-542-5507

**Administrators:** Paul Hooper  
Fish Biologist  
paul.hooper@usda.gov



**KEY**

● = boat ramp

● = signage (N/A)

● = trash receptacles

● = parking

← = inbound route

→ = outbound route

	Access Checklist
Lot/ramp condition	<ul style="list-style-type: none"> <li>asphalt ramp, concrete ramp</li> <li>good condition</li> </ul>
Parking	<ul style="list-style-type: none"> <li>38 spaces</li> </ul>
Existing Infrastructure	<ul style="list-style-type: none"> <li>Trash</li> <li>Restroom</li> <li>NO AIS tools</li> <li>NO AIS signage</li> </ul>
User demographics & activities	<ul style="list-style-type: none"> <li>Motorized/non-motorized boats, shoreline anglers, tourist sightseers</li> <li>45-55 white</li> </ul>
Busy season	<ul style="list-style-type: none"> <li>May thru Sept</li> </ul>
Inspector/Decon?	<ul style="list-style-type: none"> <li>None at access or surrounding areas</li> </ul>
Flood prone?	<ul style="list-style-type: none"> <li>No</li> </ul>
Cell service/electricity?	<ul style="list-style-type: none"> <li>Cell service, no electricity</li> </ul>
Infested	<ul style="list-style-type: none"> <li>Faucet snail present</li> <li>Threat of Curly-leaf pondweed, New Zealand mud snail, Parrotfeather found locally</li> </ul>



**Georgetown Lake is classified as: HIGH RISK**

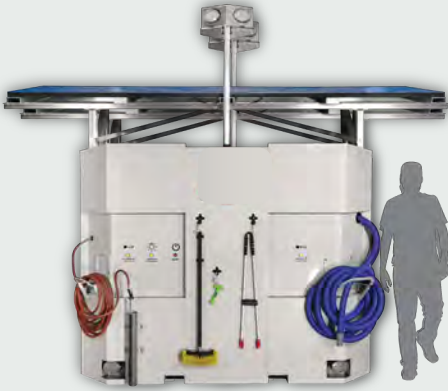
- Due to**
- Lack of prevention tools & signage
  - Threat of outbound spread of Faucet snail, inbound spread of Curly-leaf pondweed, New Zealand mud snail, Parrotfeather





### KEY

- = boat ramp
- = signage
- ← = inbound route
- = tools/equipment
- = parking
- = outbound route



### Access Recommendations:

#### Watercraft cleaning equipment: Inbound/Outbound

- Solar powered Wayside cleaning station: CD3 systems
  - Clean Drain Dry wrap
  - Stop Invasive Species wrap
  - Everyone Likes a Clean Boat wrap
- Landing Station cleaning system: MAJK Solutions
  - Clean Drain Dry (Angler) sign



#### Signage: Inbound/Outbound

- Install Clean Drain Dry & educational signage at boat ramp entry
  - Risk Species: **Faucet snail, Curly-leaf pondweed, New Zealand mud snail, and Parrotfeather**
- Signage near watercraft cleaning equipment
- Clean Drain Dry stenciled pavement markings on concrete boat ramp

### Community Outreach, Prevention, & Awareness Recommendations:

#### Distribute Clean Drain Dry outreach materials

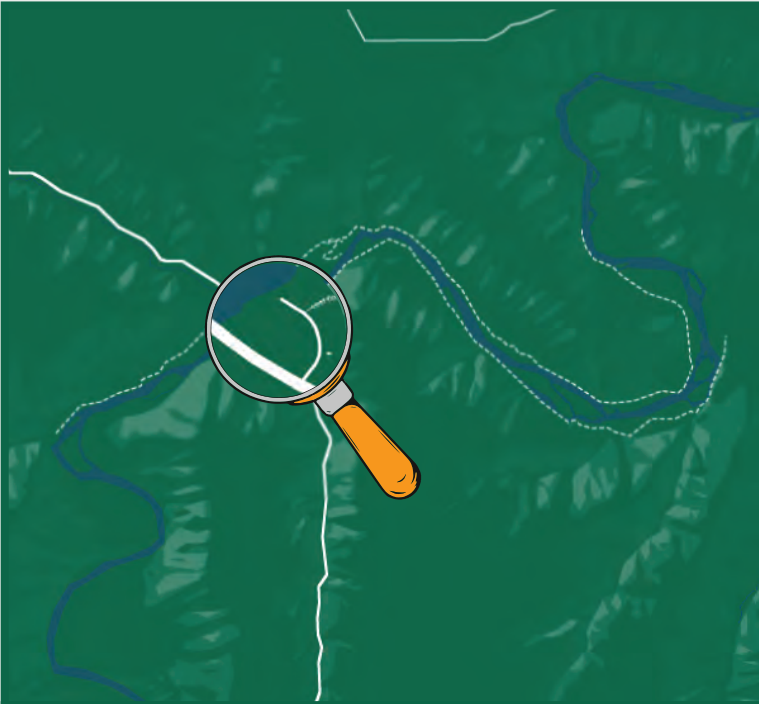
- Brushes, boat towels, brochures, decals, other Clean Drain Dry branded products are available at [CleanDrainDry.org](http://CleanDrainDry.org)
- Use watercraft inspectors or volunteer outreach at local events, fairs, bait shops, visitor centers, and retailers to educate the community and distribute outreach materials.

#### Media & Marketing

- Deploy Clean Drain Dry outreach campaign
  - Streaming ads, outdoor billboards, gas stations, social, radio, print ads
  - Targeted social media: Facebook and Instagram ads
  - Geofenced digital web and mobile device ads
    - Target users who have visited certain areas. Setting up digital fences around this access and others around it allow us to target users continually.



The John Day River is a tributary of the Columbia River. Extensively used for irrigation, the river is home to salmon runs and recreational activities from rafting to angling. While the area has not had any reported aquatic infestations, Eurasian watermilfoil and Flowering rush can be found to the North in the Columbia.



**Access Ownership:** Oregon Parks & Rec Dept



**Stakeholder contact:** Monica Morin  
Outdoor Recreation Planner  
mmorin@blm.gov  
541-416-6718

**KEY**

- = boat ramp
- = trash (seasonal)
- ← = inbound route
- = signage
- = parking
- = outbound route

<b>Access Checklist</b>	
<b>Lot/ramp condition</b>	<ul style="list-style-type: none"> <li>Gravel lot with natural ramp</li> <li>Fair condition</li> </ul>
<b>Parking</b>	<ul style="list-style-type: none"> <li>50 spaces</li> </ul>
<b>Existing Infrastructure</b>	<ul style="list-style-type: none"> <li>NO AIS prevention tools or signage</li> <li>Dumpsters &amp; Site ID signage</li> </ul>
<b>User demographics &amp; activities</b>	<ul style="list-style-type: none"> <li>Whitewater boaters, driving tourists, state park hikers, anglers</li> <li>Broad demographics</li> </ul>
<b>Busy season</b>	<ul style="list-style-type: none"> <li>Memorial day through mid-July</li> </ul>
<b>Inspector/Decon?</b>	<ul style="list-style-type: none"> <li>None at access or surrounding areas</li> </ul>
<b>Flood prone?</b>	<ul style="list-style-type: none"> <li>Seasonal flooding in May</li> </ul>
<b>Cell service/electricity?</b>	<ul style="list-style-type: none"> <li>No cell service, no electricity</li> </ul>
<b>Infested</b>	<ul style="list-style-type: none"> <li>Goathead (terrestrial) present</li> <li>Threat of Eurasian watermilfoil &amp; Flowering rush found locally</li> </ul>



**John Day River is classified as: MEDIUM RISK**

**Due to**

- Lack of prevention tools & signage
- Threat of outbound spread of Goathead, inbound spread of Eurasian watermilfoil, Flowering rush.



### KEY

- = boat ramp
- = signage
- ← = inbound route
- = tools/equipment
- = parking
- = outbound route



### Access Recommendations:

#### Watercraft cleaning equipment: Inbound/Outbound

- Landing Station cleaning systems:
  - MAJK Solutions x 2
  - Clean Drain Dry (Angler) sign
  - Aqua Weed Stick
  - Extendable brush



#### Signage: Inbound/Outbound

- Install Clean Drain Dry & Educational signage at access entry
  - Risk Species: **Goathead**, **Eurasian watermilfoil** and **Flowering rush**
- Signage near watercraft cleaning equipment



### Community Outreach, Prevention, & Awareness Recommendations:

#### Distribute Clean Drain Dry outreach materials

- Brushes, boat towels, brochures, decals, other Clean Drain Dry branded products are available at [CleanDrainDry.org](http://CleanDrainDry.org)
- Use watercraft inspectors or volunteer outreach at local events, fairs, bait shops, visitor centers, and retailers to educate the community and distribute outreach materials.



#### Media & Marketing

- Deploy Clean Drain Dry outreach campaign
  - Streaming ads, outdoor billboards, gas stations, social, radio, print ads
  - Targeted social media: Facebook and Instagram ads
  - Geofenced digital web and mobile device ads
    - Target users who have visited certain areas. Setting up digital fences around this access and others around it allow us to target users continually.



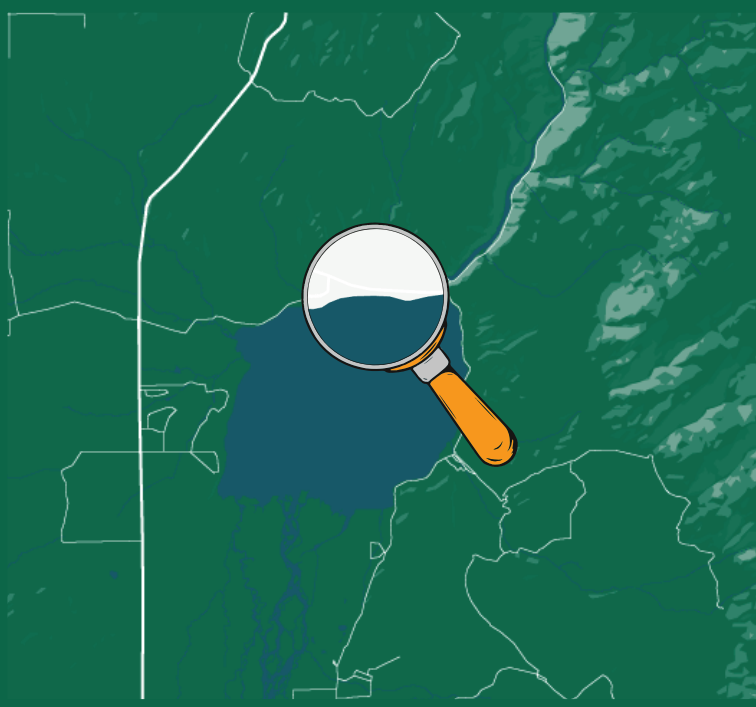
# Kobayashi Beach

45° 26' 54.24" N, 111° 40' 28.58"

## Ennis Lake

Ennis, MT

Ennis Lake is a reservoir on the Madison river created by the Madison hydroelectric dam. Kobayashi Beach sits just above the dam and serves as the larger of two public water accesses on the reservoir. Ennis Lake is broadly infested with Curly-leaf pondweed, while New Zealand mud snail is present upstream and downstream.



**Access Ownership:** BLM



**Access Manager:** Lacy Decker  
Outdoor Recreation Planner  
lddecker@blm.gov  
406-683-8056

### KEY

- = boat ramp
- = trash
- ← = inbound route
- = signage
- = parking
- = outbound route

	Access Checklist
Lot/ramp condition	<ul style="list-style-type: none"> <li>Gravel lot with concrete ramp</li> <li>Good condition</li> </ul>
Parking	<ul style="list-style-type: none"> <li>50 spaces</li> </ul>
Existing Infrastructure	<ul style="list-style-type: none"> <li>NO AIS prevention tools or signage</li> <li>Dumpsters &amp; Site ID signage</li> </ul>
User demographics & activities	<ul style="list-style-type: none"> <li>Driving tourists, anglers, whitewater rafters, recreational boaters</li> <li>Broad demographics</li> </ul>
Busy season	<ul style="list-style-type: none"> <li>Year round including ice fishing in winter</li> </ul>
Inspector/Decon?	<ul style="list-style-type: none"> <li>None at access or surrounding areas</li> </ul>
Flood prone?	<ul style="list-style-type: none"> <li>N/A</li> </ul>
Cell service/electricity?	<ul style="list-style-type: none"> <li>N/A</li> </ul>
Infested	<ul style="list-style-type: none"> <li>Curly-leaf pondweed present</li> <li>Threat of New Zealand mud snail found locally</li> </ul>



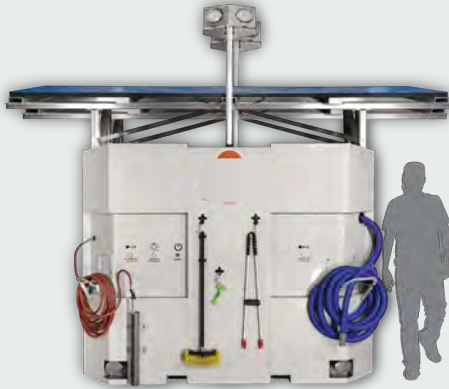
### Ennis Lake is classified as: HIGH RISK

- Due to**
- Lack of prevention tools & signage
  - Threat of outbound spread of Curly-leaf pondweed, inbound spread of New Zealand mud snail.



### KEY

- = boat ramp tattoo
- = signage
- ← = inbound route
- = tools/equipment
- = parking
- = outbound route



### Access Recommendations:

#### Watercraft cleaning equipment: Inbound/Outbound

- Solar powered Wayside cleaning station: CD3 systems
  - Clean Drain Dry wrap
  - Stop Invasive Species wrap
  - Everyone Likes a Clean Boat wrap
- Landing Station cleaning system: MAJK Solutions
  - Clean Drain Dry (Angler) sign



#### Signage: Inbound/Outbound

- Install Clean Drain Dry & educational signage at access entry
  - Risk Species: **Curly-leaf pondweed** and **New Zealand mud snail**
- Signage near watercraft cleaning equipment
- Clean Drain Dry stenciled pavement markings on concrete boat ramp

### Community Outreach, Prevention, & Awareness Recommendations:

#### Distribute Clean Drain Dry outreach materials

- Brushes, boat towels, brochures, decals, other Clean Drain Dry branded products are available at CleanDrainDry.org
- Use watercraft inspectors or volunteer outreach at local events, fairs, bait shops, visitor centers, and retailers to educate the community and distribute outreach materials.

#### Media & Marketing

- Deploy Clean Drain Dry outreach campaign
  - Streaming ads, outdoor billboards, gas stations, social, radio, print ads
  - Targeted social media: Facebook and Instagram ads
  - Geofenced digital web and mobile device ads
    - Target users who have visited certain areas. Setting up digital fences around this access and others around it allow us to target users continually.



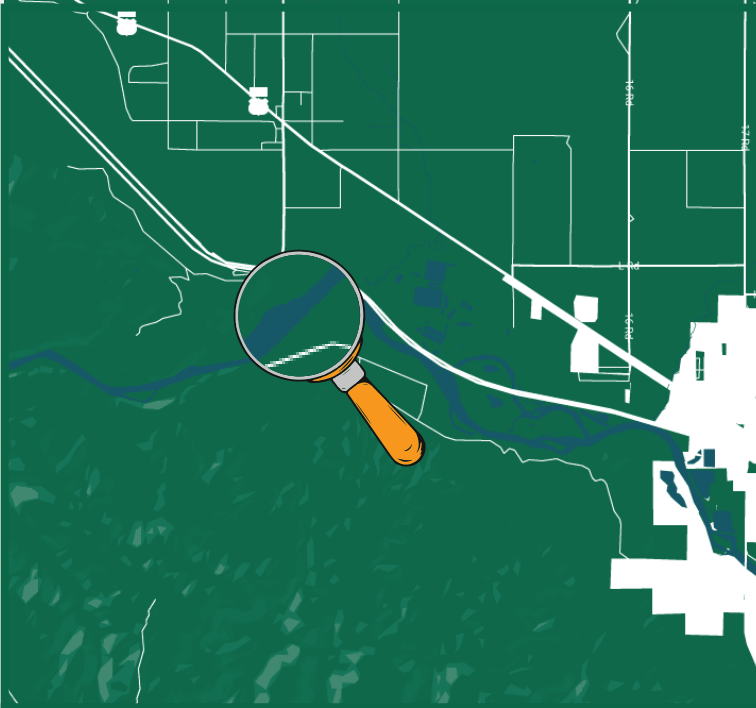
# Loma Boat Launch

39° 10' 25.08" N, 108° 48' 28.09" W

Colorado River

Fruita, CO

The Colorado River is one of the principal rivers in the Southwestern United States, draining an expansive, arid watershed that covers parts of seven U.S. States. New Zealand mud snail are present upstream, and the threat of Flowering Rush can be found locally. Zebra mussels were recently found for the first time in Colorado.



**Access Ownership:** CO Parks & Wildlife



**Other stakeholders:** Adjacent BLM land, Bureau of Rec land

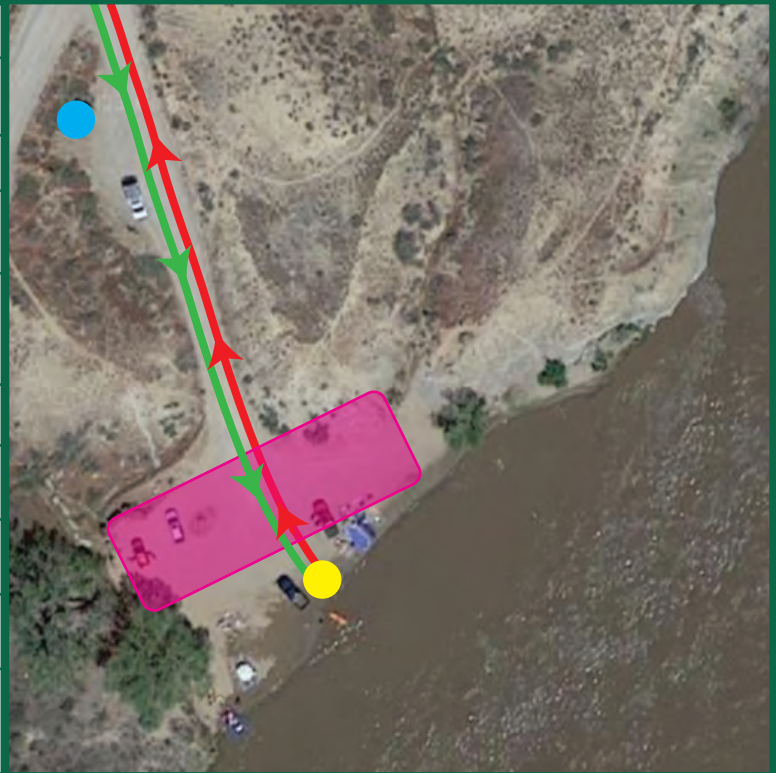


**Access Manager:** Robert Walters  
Invasive Species Prgm. Mgr.  
robert.walters@state.co.us  
303-291-7833

**KEY**

- = boat ramp
- = signage
- = trash receptacles (N/A)
- = parking
- ← = inbound route
- = outbound route

	<b>Access Checklist</b>
<b>Lot/ramp condition</b>	<ul style="list-style-type: none"> <li>Dirt lot, dirt ramp, often muddy</li> <li>Poor condition</li> </ul>
<b>Parking</b>	<ul style="list-style-type: none"> <li>6 spaces, adjacent lot with adtl. space</li> </ul>
<b>Existing Infrastructure</b>	<ul style="list-style-type: none"> <li>NO AIS prevention tools</li> <li>1 restroom, NO other infrastructure</li> </ul>
<b>User demographics &amp; activities</b>	<ul style="list-style-type: none"> <li>Heavy use by many demographics</li> <li>Motorized/non-motorized boats, hunters, anglers, rafters, paddleboarders</li> </ul>
<b>Busy season</b>	<ul style="list-style-type: none"> <li>May thru Aug, 50+ craft/day</li> </ul>
<b>Inspector/Decon?</b>	<ul style="list-style-type: none"> <li>None at access or surrounding areas</li> </ul>
<b>Flood prone?</b>	<ul style="list-style-type: none"> <li>Partial flooding May - July</li> </ul>
<b>Cell service/electricity?</b>	<ul style="list-style-type: none"> <li>Cell service + electricity</li> </ul>
<b>Infested</b>	<ul style="list-style-type: none"> <li>New Zealand mud snail present upstream</li> <li>Threat of Flowering rush found locally</li> </ul>



**Colorado River is classified as: HIGH RISK**

**Due to** • Lack of prevention tools  
• Threat of outbound spread of New Zealand mud snail, inbound spread of Flowering rush, Zebra mussels.



### KEY

- = boat ramp
- = tools/equipment
- = signage
- = parking
- ← = inbound route
- = outbound route



### Access Recommendations:

#### Watercraft cleaning equipment: Inbound/Outbound

- Landing Station cleaning system: MAJK Solutions
  - Clean Drain Dry (Angler) sign
  - Aqua Weed Stick
  - Extendable brush



### Signage: Inbound/Outbound

- Install Clean Drain Dry & Educational signage at access
  - Risk Species: **New Zealand mud snail, Flowering rush, and Quagga/Zebra mussels**
- Signage near ramp directing users to watercraft cleaning equipment



### Community Outreach, Prevention, & Awareness Recommendations:

#### Distribute Clean Drain Dry outreach materials

- Brushes, boat towels, brochures, decals, other Clean Drain Dry branded products are available at [CleanDrainDry.org](http://CleanDrainDry.org)
- Use watercraft inspectors or volunteer outreach at local events, fairs, bait shops, visitor centers, and retailers to educate the community and distribute outreach materials.



#### Media & Marketing

- Deploy Clean Drain Dry outreach campaign
  - Streaming ads, outdoor billboards, gas stations, social, radio, print ads
  - Targeted social media: Facebook and Instagram ads
  - Geofenced digital web and mobile device ads
    - Target users who have visited certain areas. Setting up digital fences around this access and others around it allow us to target users continually.



# Maiden Rock Boat Ramp

Big Hole River

Divide, MT

45° 42' 15.8" N, 112° 44' 34.64"

Big Hole River is a tributary of the Jefferson River which is a tributary to the Missouri. A historically popular destination for fly fishing, this Blue Ribbon Trout Stream is the last remaining habitat in the contiguous United States for fluvial Arctic grayling. Nearby Curly-leaf pondweed poses an inbound threat to this waterway.



**Access Ownership:** BLM



**Access Manager:** Lacy Decker  
Outdoor Recreation Planner  
lddecker@blm.gov  
406-683-8056

**KEY**

- = boat ramp
- = trash (N/A)
- ← = inbound route
- = signage (N/A)
- ▭ = parking
- = outbound route

	<b>Access Checklist</b>
Lot/ramp condition	<ul style="list-style-type: none"> <li>Gravel lot with natural ramp</li> <li>Poor condition</li> </ul>
Parking	<ul style="list-style-type: none"> <li>15 spaces</li> </ul>
Existing Infrastructure	<ul style="list-style-type: none"> <li>NO AIS prevention tools or signage</li> <li>NO other amenities on site</li> </ul>
User demographics & activities	<ul style="list-style-type: none"> <li>River rafters, anglers, recreational boaters, driving tourists</li> <li>Broad demographics</li> </ul>
Busy season	<ul style="list-style-type: none"> <li>N/A</li> </ul>
Inspector/Decon?	<ul style="list-style-type: none"> <li>None at access or surrounding areas</li> </ul>
Flood prone?	<ul style="list-style-type: none"> <li>N/A</li> </ul>
Cell service/electricity?	<ul style="list-style-type: none"> <li>N/A</li> </ul>
Infested	<ul style="list-style-type: none"> <li>No existing infestations</li> <li>Threat of CLPW found locally</li> </ul>



**Big Hole River is classified as: HIGH RISK**

- Due to**
- Lack of prevention tools & signage
  - Threat of inbound spread of Curly-leaf pondweed.





### KEY

- = boat ramp
- = tools/equipment
- = signage
- = parking
- ← = inbound route
- = outbound route



### Access Recommendations:

#### Watercraft cleaning equipment: Inbound/Outbound

- Landing Station cleaning system: MAJK Solutions
  - Clean Drain Dry (Angler) sign
  - 4' Aqua Weed Stick
  - 4' boat brush



#### Signage: Inbound/Outbound

- Install Clean Drain Dry & educational signage at access
  - Risk Species: **Curly-leaf pondweed**
- Signage near watercraft cleaning equipment

### Community Outreach, Prevention, & Awareness Recommendations:

#### Distribute Clean Drain Dry outreach materials

- Brushes, boat towels, brochures, decals, other Clean Drain Dry branded products are available at [CleanDrainDry.org](http://CleanDrainDry.org)
- Use watercraft inspectors or volunteer outreach at local events, fairs, bait shops, visitor centers, and retailers to educate the community and distribute outreach materials.



#### Media & Marketing

- Deploy Clean Drain Dry outreach campaign
  - Streaming ads, outdoor billboards, gas stations, social, radio, print ads
  - Targeted social media: Facebook and Instagram ads
  - Geofenced digital web and mobile device ads
    - Target users who have visited certain areas. Setting up digital fences around this access and others around it allow us to target users continually.



# Point of Rocks

45° 47' 19.9" N, 112° 07' 41.0" W

## Jefferson River

## Renova, MT

The Jefferson River is a tributary of the Missouri River. Point of Rocks is an undeveloped recreation site that can be used as an access point by paddlers to hike up into the hills. Eurasian watermilfoil is present nearby, and Curly-leaf pondweed is considered an inbound threat to this area.



**Access Ownership:** BLM



**Access Manager:** Lacy Decker  
Outdoor Recreation Planner  
lddecker@blm.gov  
406-683-8056

### KEY

- = access
- = trash (N/A)
- ← = inbound route
- = signage (N/A)
- = parking
- = outbound route

	Access Checklist
Lot/ramp condition	<ul style="list-style-type: none"> <li>Natural lot with natural ramp</li> <li>Unimproved condition</li> </ul>
Parking	<ul style="list-style-type: none"> <li>15 spaces</li> </ul>
Existing Infrastructure	<ul style="list-style-type: none"> <li>NO AIS prevention tools or signage</li> <li>NO other amenities on site</li> </ul>
User demographics & activities	<ul style="list-style-type: none"> <li>River rafters, driving tourists</li> <li>Broad demographics</li> </ul>
Busy season	<ul style="list-style-type: none"> <li>N/A</li> </ul>
Inspector/Decon?	<ul style="list-style-type: none"> <li>None at access or surrounding areas</li> </ul>
Flood prone?	<ul style="list-style-type: none"> <li>N/A</li> </ul>
Cell service/electricity?	<ul style="list-style-type: none"> <li>N/A</li> </ul>
Infested	<ul style="list-style-type: none"> <li>Eurasian watermilfoil present in area</li> <li>Threat of Curly-leaf pondweed found locally</li> </ul>



### Big Hole River is classified as: **MEDIUM RISK**

- Due to**
- Lack of prevention tools & signage
  - Threat of outbound spread of Eurasian watermilfoil, inbound spread of Curly-leaf pondweed.



### KEY

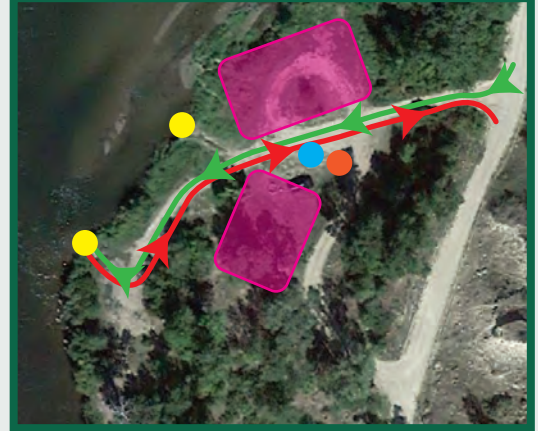
- = boat ramp
- = signage
- ← = inbound route
- = tools/equipment
- = parking
- = outbound route



### Access Recommendations:

#### Watercraft cleaning equipment: Inbound/Outbound

- Landing Station cleaning system: MAJK Solutions
  - Clean Drain Dry (Angler) sign
  - 4' Aqua Weed Stick
  - 4' boat brush



### Signage: Inbound/Outbound

- Install Clean Drain Dry & educational signage at access entry
  - Risk Species: **Curly-leaf pondweed** and **Eurasian watermilfoil**
- Signage near watercraft cleaning equipment



### Community Outreach, Prevention, & Awareness Recommendations:

#### Distribute Clean Drain Dry outreach materials

- Brushes, boat towels, brochures, decals, other Clean Drain Dry branded products are available at CleanDrainDry.org
- Use watercraft inspectors or volunteer outreach at local events, fairs, bait shops, visitor centers, and retailers to educate the community and distribute outreach materials.



#### Media & Marketing

- Deploy Clean Drain Dry outreach campaign
  - Streaming ads, outdoor billboards, gas stations, social, radio, print ads
  - Targeted social media: Facebook and Instagram ads
  - Geofenced digital web and mobile device ads
    - Target users who have visited certain areas. Setting up digital fences around this access and others around it allow us to target users continually.



# Rainbow Point Boat Ramp

Hebgen Lake ——— West Yellowstone, MT

44° 46' 45.59" N, 111° 10' 28.43" W

Hebgen Lake is a heavily trafficked water body with five developed accesses and more than 20 undeveloped accesses. The lake faces current infestations of New Zealand mud snail and Curly-leaf pondweed. Rainbow Point Boat Ramp is located in a particularly weedy bay and is the largest access on the lake.



**Access Ownership:** USFS



**Access Manager:** Jason Brey  
District Ranger  
jason.brey@usda.gov  
406-823-6963

**Administrators:** Clint Sestrich  
Fisheries Biologist  
clint.sestrich@usda.gov  
406-823-6067

**KEY**

- = boat ramp
- = trash receptacles
- ← = inbound route
- = signage (N/A)
- ▭ = parking
- = outbound route

	Access Checklist
Lot/ramp condition	<ul style="list-style-type: none"> <li>Gravel lot with concrete ramp,</li> <li>fair condition</li> </ul>
Parking	<ul style="list-style-type: none"> <li>12 spaces</li> </ul>
Existing Infrastructure	<ul style="list-style-type: none"> <li>NO AIS prevention tools or signage</li> <li>Dumpsters, port-a-john</li> </ul>
User demographics & activities	<ul style="list-style-type: none"> <li>55+ white men</li> <li>Motorized/non-motorized boats, shoreline anglers, hunters</li> </ul>
Busy season	<ul style="list-style-type: none"> <li>May thru Oct</li> </ul>
Inspector/Decon?	<ul style="list-style-type: none"> <li>None at access or surrounding areas</li> </ul>
Accesses on lake	<ul style="list-style-type: none"> <li>5 developed, 20 undeveloped</li> </ul>
Cell service/electricity?	<ul style="list-style-type: none"> <li>Cell service, no electricity</li> </ul>
Infested	<ul style="list-style-type: none"> <li>Curly-leaf pondweed + New Zealand mud snail present</li> <li>Threat of Eurasian watermilfoil found locally</li> </ul>



**Hebgen Lake is classified as: HIGH RISK**

**Due to**

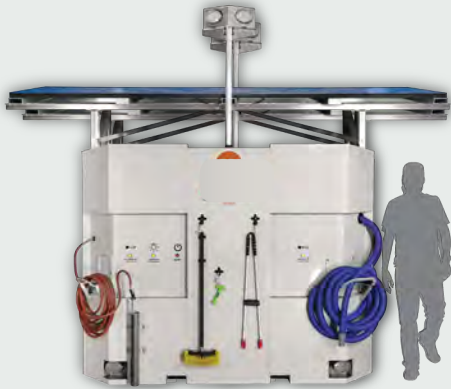
- Lack of prevention tools & signage
- Threat of outbound spread of New Zealand mud snail and Curly-leaf pondweed, inbound spread of Eurasian watermilfoil



# Rainbow Point Boat Ramp | Hebgen Lake ——— West Yellowstone, MT

## KEY

- = boat ramp tattoo
- = signage
- ← = inbound route
- = tools/equipment
- ▭ = parking
- = outbound route



### Access Recommendations:

#### Watercraft cleaning equipment: Inbound/Outbound

- Solar powered Wayside cleaning station: CD3 systems
  - Clean Drain Dry wrap
  - Stop Invasive Species wrap
  - Everyone Likes a Clean Boat wrap
- Landing Station cleaning system: MAJK Solutions
  - Clean Drain Dry (Angler) sign



#### Signage: Inbound/Outbound

- Install Clean Drain Dry & educational signage at boat ramp entry
  - Risk Species: **New Zealand mud snail**, **Curly leaf pondweed**, and **Eurasian watermilfoil**
- Signage near watercraft cleaning equipment
- Clean Drain Dry stenciled pavement markings on concrete boat ramp



### Community Outreach, Prevention, & Awareness Recommendations:

#### Distribute Clean Drain Dry outreach materials

- Brushes, boat towels, brochures, decals, other Clean Drain Dry branded products are available at CleanDrainDry.org
- Use watercraft inspectors or volunteer outreach at local events, fairs, bait shops, visitor centers, and retailers to educate the community and distribute outreach materials.

#### Media & Marketing

- Deploy Clean Drain Dry outreach campaign
  - Streaming ads, outdoor billboards, gas stations, social, radio, print ads
  - Targeted social media: Facebook and Instagram ads
  - Geofenced digital web and mobile device ads
    - Target users who have visited certain areas. Setting up digital fences around this access and others around it allow us to target users continually.



# Service Creek Boat Launch

44° 47' 37.14" N, 120° 0' 3.28" W

John Day River

Spray, OR

The John Day River is a tributary of the Columbia River. Extensively used for irrigation, the river is home to salmon runs and recreational activities from rafting to angling. While the area has not had any reported aquatic infestations, Eurasian watermilfoil and Flowering rush can be found to the North in the Columbia.



**Access Ownership:** BLM



**Access Manager:** Monica Morin  
Outdoor Recreation Planner  
mmorin@blm.gov  
541-416-6718

**KEY**

- = boat ramp
- = signage
- = trash receptacles (N/A)
- = parking
- ← = inbound route
- = outbound route

	<b>Access Checklist</b>
<b>Lot/ramp condition</b>	<ul style="list-style-type: none"> <li>Gravel lot with river cobble ramp</li> <li>Fair condition</li> </ul>
<b>Parking</b>	<ul style="list-style-type: none"> <li>30 spaces</li> </ul>
<b>Existing Infrastructure</b>	<ul style="list-style-type: none"> <li>NO AIS prevention tools or signage</li> <li>Trash can &amp; Site ID signage</li> </ul>
<b>User demographics &amp; activities</b>	<ul style="list-style-type: none"> <li>Whitewater boaters, driving tourists, anglers</li> <li>Broad demographics</li> </ul>
<b>Busy season</b>	<ul style="list-style-type: none"> <li>Memorial day through mid-July</li> </ul>
<b>Inspector/Decon?</b>	<ul style="list-style-type: none"> <li>None at access or surrounding areas</li> </ul>
<b>Flood prone?</b>	<ul style="list-style-type: none"> <li>Seasonal flooding in May</li> </ul>
<b>Cell service/electricity?</b>	<ul style="list-style-type: none"> <li>No cell service, no electricity</li> </ul>
<b>Infested</b>	<ul style="list-style-type: none"> <li>Goathead (terrestrial) present</li> <li>Threat of Eurasian watermilfoil &amp; Flowering rush found locally</li> </ul>



**John Day River is classified as: MEDIUM RISK**

- Due to**
- Lack of prevention tools & signage
  - Threat of outbound spread of Goathead, inbound spread of Eurasian watermilfoil, Flowering rush.



### KEY

- = boat ramp
- = signage
- ← = inbound route
- = tools/equipment
- = parking
- = outbound route



### Access Recommendations:

#### Watercraft cleaning equipment: Inbound/Outbound

- Landing Station cleaning system: MAJK Solutions
  - Clean Drain Dry (Angler) sign
  - Aqua Weed Stick
  - Extendable brush



#### Signage: Inbound/Outbound

- Install Clean Drain Dry & Educational signage at access entry
  - Risk Species: **Goathead**, **Eurasian watermilfoil** and **Flowering rush**
- Signage near ramp exit directing to watercraft cleaning equipment



#### Community Outreach, Prevention, & Awareness Recommendations:

##### Distribute Clean Drain Dry outreach materials

- Brushes, boat towels, brochures, decals, other Clean Drain Dry branded products are available at [CleanDrainDry.org](http://CleanDrainDry.org)
- Use watercraft inspectors or volunteer outreach at local events, fairs, bait shops, visitor centers, and retailers to educate the community and distribute outreach materials.

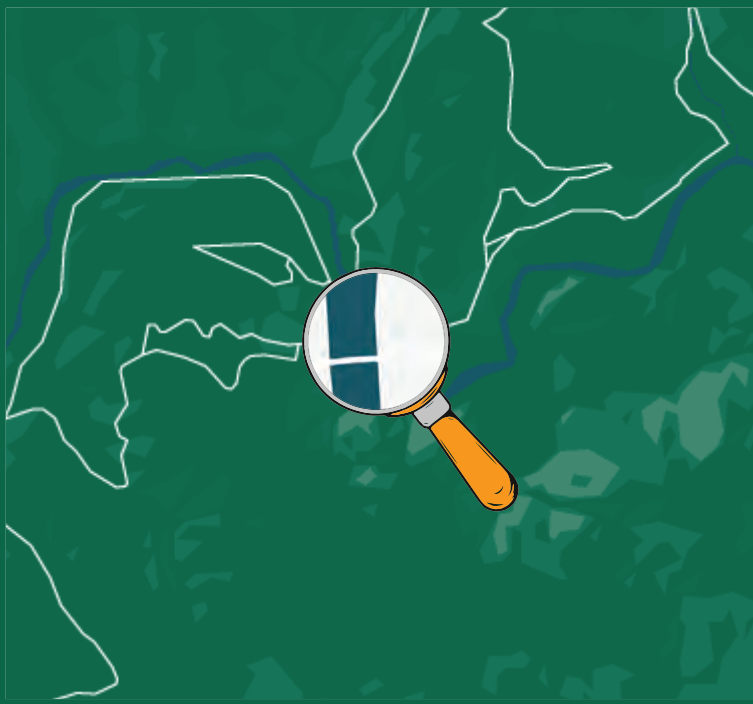


##### Media & Marketing

- Deploy Clean Drain Dry outreach campaign
  - Streaming ads, outdoor billboards, gas stations, social, radio, print ads
  - Targeted social media: Facebook and Instagram ads
  - Geofenced digital web and mobile device ads
    - Target users who have visited certain areas. Setting up digital fences around this access and others around it allow us to target users continually.



**Blackfoot River is a snow-fed, spring-fed river in western Montana known for its recreational opportunities including fly fishing, rafting, canoeing, and inner tubing. Fast and cold with many deep spots, the Blackfoot is prime trout habitat. Threats of invasive Flowering rush can be found nearby.**



**Access Ownership:** BLM

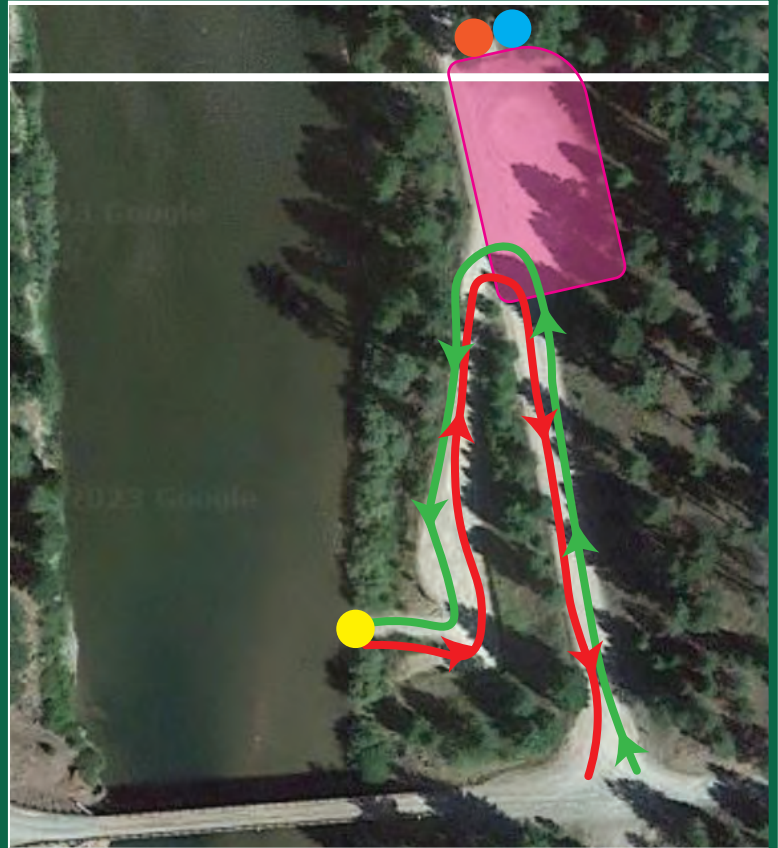


**Access Manager:** Maria Craig  
Outdoor Recreation Planner  
macraig@blm.gov  
406-329-1058

**KEY**

- = boat ramp
- = trash
- ← = inbound route
- = signage
- ▭ = parking
- = outbound route

<b>Access Checklist</b>	
<b>Lot/ramp condition</b>	<ul style="list-style-type: none"> <li>• Gravel lot with concrete ramp</li> <li>• Fair condition</li> </ul>
<b>Parking</b>	<ul style="list-style-type: none"> <li>• 15 spaces</li> </ul>
<b>Existing Infrastructure</b>	<ul style="list-style-type: none"> <li>• NO AIS prevention tools or signage</li> <li>• Restroom, trash, site ID signage</li> </ul>
<b>User demographics &amp; activities</b>	<ul style="list-style-type: none"> <li>• Motorized, River rafters, driving tourists, anglers</li> <li>• Broad demographics</li> </ul>
<b>Busy season</b>	<ul style="list-style-type: none"> <li>• July thru August</li> </ul>
<b>Inspector/Decon?</b>	<ul style="list-style-type: none"> <li>• None at access or surrounding areas</li> </ul>
<b>Flood prone?</b>	<ul style="list-style-type: none"> <li>• March thru June</li> </ul>
<b>Cell service/electricity?</b>	<ul style="list-style-type: none"> <li>• N/A</li> </ul>
<b>Infested</b>	<ul style="list-style-type: none"> <li>• Threat of Flowering rush found locally</li> </ul>



**Big Hole River is classified as: HIGH RISK**

- Due to**
- Lack of prevention tools & signage
  - Threat of inbound spread of Flowering rush





### KEY

- = boat ramp
- = signage
- ← = inbound route
- = tools/equipment
- = parking
- ➔ = outbound route



### Access Recommendations:

#### Watercraft cleaning equipment: Inbound/Outbound

- Landing Station cleaning system: MAJK Solutions
  - Clean Drain Dry (Angler) sign
  - 4' Aqua Weed Stick
  - 4' boat brush



#### Signage: Inbound/Outbound

- Install Clean Drain Dry & educational signage at access entry
  - Risk Species: **Flowering rush**
  - Signage near watercraft cleaning equipment

### Community Outreach, Prevention, & Awareness Recommendations:

#### Distribute Clean Drain Dry outreach materials

- Brushes, boat towels, brochures, decals, other Clean Drain Dry branded products are available at [CleanDrainDry.org](http://CleanDrainDry.org)
- Use watercraft inspectors or volunteer outreach at local events, fairs, bait shops, visitor centers, and retailers to educate the community and distribute outreach materials.



#### Media & Marketing

- Deploy Clean Drain Dry outreach campaign
  - Streaming ads, outdoor billboards, gas stations, social, radio, print ads
  - Targeted social media: Facebook and Instagram ads
  - Geofenced digital web and mobile device ads
    - Target users who have visited certain areas. Setting up digital fences around this access and others around it allow us to target users continually.



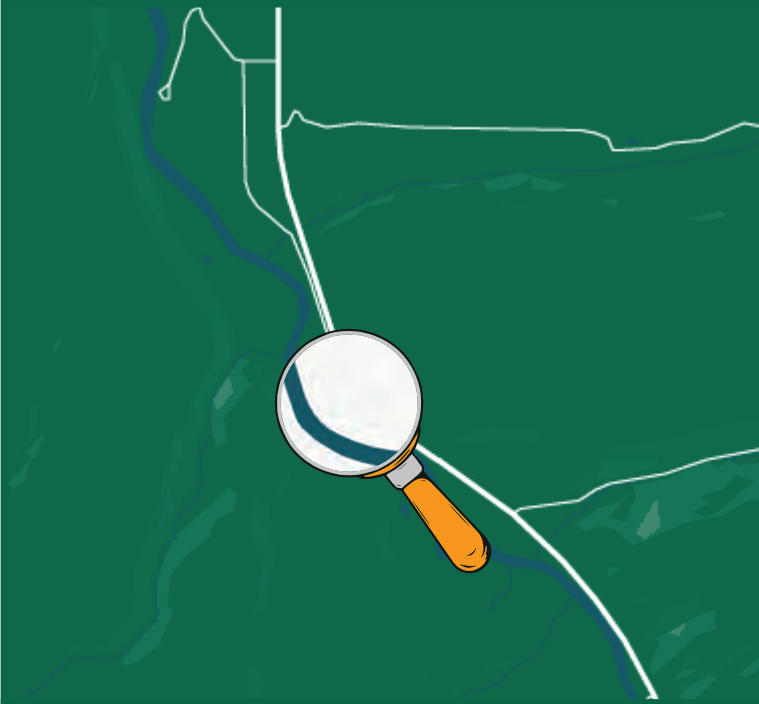
# Windy Point Boat Launch

44° 58' 2.28" N, 111° 38' 30.0" W

Madison River

Cameron, MT

The Madison River is a headwater tributary of the Missouri River. Many accesses on the Madison face heavy angling pressure during fishing season, and Windy Point Boat Launch, one of the furthest sites upriver, is no exception. New Zealand mud snail and Curly-leaf pondweed are existing invasive threats to the area.



**Access Ownership:** BLM



**Access Manager:** Lacy Decker  
Outdoor Recreation Planner  
lddecker@blm.gov  
406-683-8056

**KEY**

- = access
- = trash
- ← = inbound route
- = signage
- = parking
- = outbound route

	<b>Access Checklist</b>
Lot/ramp condition	<ul style="list-style-type: none"> <li>Paved lot with concrete ramp</li> <li>Good condition</li> </ul>
Parking	<ul style="list-style-type: none"> <li>26 spaces</li> </ul>
Existing Infrastructure	<ul style="list-style-type: none"> <li>NO AIS prevention tools or signage</li> <li>Restroom, trash, site ID signage</li> </ul>
User demographics & activities	<ul style="list-style-type: none"> <li>Anglers, River rafters, driving tourists</li> <li>Broad demographics</li> </ul>
Busy season	<ul style="list-style-type: none"> <li>May thru November</li> </ul>
Inspector/Decon?	<ul style="list-style-type: none"> <li>None at access or surrounding areas</li> </ul>
Flood prone?	<ul style="list-style-type: none"> <li>N/A</li> </ul>
Cell service/electricity?	<ul style="list-style-type: none"> <li>N/A</li> </ul>
Infested	<ul style="list-style-type: none"> <li>Threat of Curly-leaf pondweed and New Zealand mud snail found locally</li> </ul>



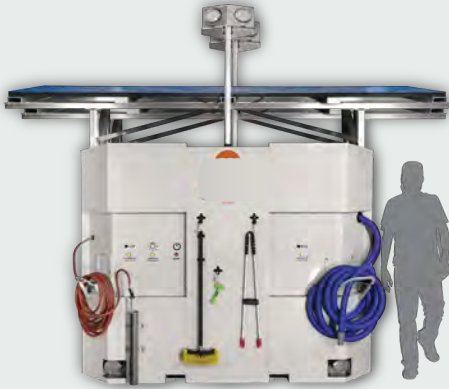
**Big Hole River is classified as: HIGH RISK**

- Due to**
- Lack of prevention tools & signage
  - Threat of inbound spread of New Zealand mud snail, Curly-leaf pondweed.



### KEY

- = boat ramp tattoo
- = signage
- ➔ = inbound route
- = tools/equipment
- = parking
- ➔ = outbound route



### Access Recommendations:

#### Watercraft cleaning equipment: Inbound/Outbound

- Solar powered Wayside cleaning station: CD3 systems
  - Clean Drain Dry wrap
  - Stop Invasive Species wrap
  - Everyone Likes a Clean Boat wrap
- Landing Station cleaning system: MAJK Solutions



#### Signage: Inbound/Outbound

- Install Clean Drain Dry & educational signage at access entry
  - Risk Species: **Curly-leaf pondweed** and **New Zealand mud snail**
- Signage near watercraft cleaning equipment
- Clean Drain Dry stenciled pavement markings on concrete boat ramp

### Community Outreach, Prevention, & Awareness Recommendations:

#### Distribute Clean Drain Dry outreach materials

- Brushes, boat towels, brochures, decals, other Clean Drain Dry branded products are available at CleanDrainDry.org
- Use watercraft inspectors or volunteer outreach at local events, fairs, bait shops, visitor centers, and retailers to educate the community and distribute outreach materials.



#### Media & Marketing

- Deploy Clean Drain Dry outreach campaign
  - Streaming ads, outdoor billboards, gas stations, social, radio, print ads
  - Targeted social media: Facebook and Instagram ads
  - Geofenced digital web and mobile device ads
    - Target users who have visited certain areas. Setting up digital fences around this access and others around it allow us to target users continually.



