

CLEAN. DRAIN. DRY.

PRODUCT
CATALOG

America's Guide to
Stopping Invasive Species

**CLEAN
DRAIN
DRY**TM
INITIATIVE

BROUGHT TO YOU BY



WE PROVIDE: PRODUCTS, TOOLS, MARKETING SERVICES, OUTREACH & EDUCATION

ABOUT THE CLEAN DRAIN DRY INITIATIVE™



Wildlife Forever provides award-winning invasive species media, marketing, outreach and educational services. Consistent delivery of Clean. Drain. Dry. has empowered agencies, organizations, and communities across the country to effectively change behavior with boaters, anglers, and outdoor recreational users.

This unique partnership utilizes strategic, cost saving communication and marketing services to coordinate, raise awareness of invasive species and deliver professional, ready-made materials for on-the-ground, community-based conservation.

Using new advances in technology while also valuing traditional media enables the Clean Drain Dry Team to create custom Invasive Species Prevention Plans that tailor public outreach to meet any partner's budget.

Wildlife Forever is committed to slowing the spread of invasive species and empowering best management practices for wise public use of America's natural resources. We stand ready to help with full-scale, turnkey media, marketing, educational tools and outreach services, coordinating with partners to save time and valuable resources.

For more information about media, marketing and outreach services, products or funding opportunities, contact us at: 763-253-0222 or info@WildlifeForever.org

The Clean Drain Dry Team stands ready to assist and help. We're stronger together! Let's partner in the battle against the silent invaders.

**CLEAN
DRAIN
DRY
INITIATIVE™**

OUR SERVICES

We're Here to Help

Wildlife Forever provides many full-scale, turnkey, media, marketing and advertising services. Utilizing our industry contacts saves partners time while taking advantage of deep discounts.

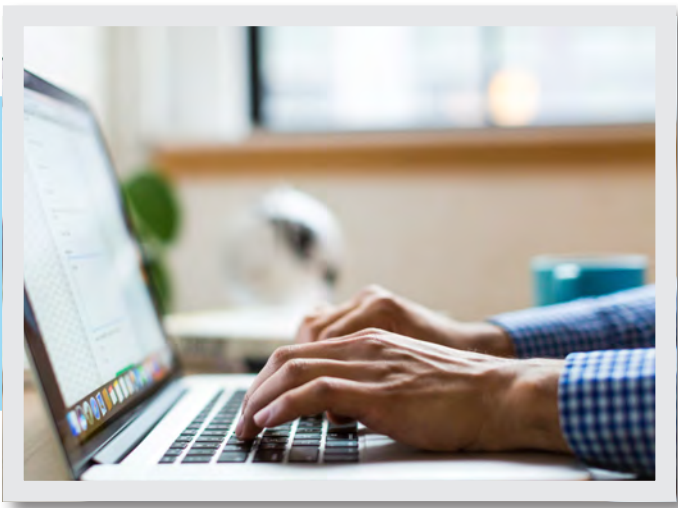


MEDIA & PRODUCT SOURCING

Utilizing over 30 years of industry contacts and marketing expertise, we are here to implement education and outreach services. Wildlife Forever can assist with media contracting for large-scale and other outdoor formats, print, digital, TV and radio programs. We pool funds and coordinate regional multi-agency outreach efforts to maximize cost and time savings.

CUSTOM GRAPHIC DESIGN

Full-scale graphic design capabilities allow us to customize campaigns and collateral while maintaining consistent messaging and brand standards.



VIDEO PRODUCTION

Wildlife Forever can provide professional videographer and production services from script and concept development to direction and post production editing.

Create your own public service announcement (PSA) and reach millions through video production.

OUTREACH MATERIALS



LURE

RATTLIN' RAPALA

Long casting, lipless design makes this lure viable anywhere you fish. 3 1/8" long and each neatly packaged.



PEN-1

PEN

Click action ball point pen with stylus tip writes with smooth, medium-point black ink.



KEYCHAIN-1

KEY FLOAT

Water-resistant, floating keychain with removable top.



BUTTON

BUTTON

2.5" button attaches to most clothing fabrics with safety pin clasp on the back.



KEYCHAIN-2

FLASHLIGHT KEYCHAIN

Convenient flashlight allows for inspection in hard to see places.



LICENSE

LICENSE HOLDER

Durable plastic holder provides anglers with a convenient place to store their fishing license for the season.



CAN-1

CAN COOZIE

Collapsible, high-quality foam can insulator.



BOBBER

CLEAN DRAIN DRY BOBBER

1.25" plastic fishing bobber.



BOTTLE-1

WATER BOTTLE

32 oz water bottle. Durable, dishwasher safe and BPA free.



FLYSWATTER

FLYSWATTER

16" Flyswatter with 4"x5" mesh head.

OUTREACH MATERIALS



DECAL-A

CALL TO ACTION DECAL
4" x 6" decal serves as a quick reminder. Great for watercraft.



DECAL-C

BOBBER DECAL
High-quality, 4" x 3" decal with UV-resistant ink.



DECAL-B

ANGLER DECAL
High-quality, 4" x 3" decal with UV-resistant ink.



DECAL-D-F

WINDOW TATTOO
8" x 8" window cling with UV-resistant ink. Suitable for all seasons. Choose between three designs.



RULER

FISH RULER DECAL
36" x 1" ruler decal. Made with weather resistant materials and space for your logo.



DECAL-H

COMMITMENT DECAL
2.5" x 11" decal using the principles of Community-Based Social Marketing. Bumper sticker quality material perfect for vehicles, boats and trailers.



WATCH CARDS

WATCH CARDS
Small fold out species-specific informational card. Available for over 10 species.



PLACEMAT-1

RESTAURANT PLACEMATS
Full color, 14" x 11" paper placemats.



STRING BAG

STRING BAG
Perfect for carrying items to and from the water.



COASTERS

BAR COASTERS
Two-sided, full color, 3.5" x 3.5" bar coasters. Many designs available.



EDUCATIONAL MATERIALS

TV PSAs, DVDs & Programming

TV PSAs

Preview on the Wildlife Forever Youtube, PSAs available for Anglers, Boaters, Non-motorized Watercraft, Waterfowl Hunters, Wakesports & more.

[VIEW ON YOUTUBE](#)



DVD-2

PLAYING SMART AGAINST INVASIVE SPECIES

Educational DVD for bikers, hikers, and even horseback riders on tips for preventing the spread.



DVD-1

DEFENDING FAVORITE PLACES

Educational DVD focused on how hunters and anglers can stop the spread.

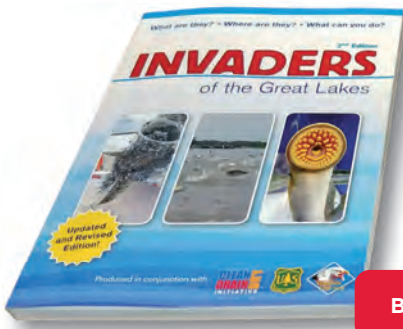


DVD-3

SILENT INVADERS

Award winning television series features seven, 30-minute programs on invasive species: Sea Lamprey, zebra mussels, Asian carp, Round Gobies, St. Lawrence Seaway, Lake Michigan and Eurasian Watermilfoil. Bonus disc includes eight - broadcast ready public service announcements.

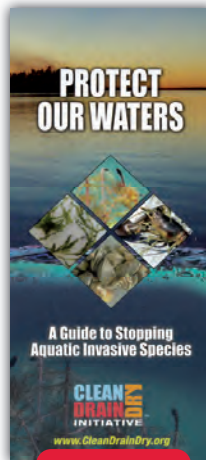
Books and Brochures



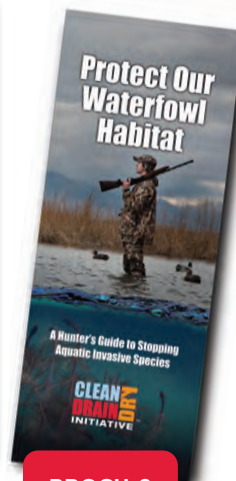
BOOK-1

INVADERS OF THE GREAT LAKES

This handy pocket guide guide spotlights 39 invasive species and details how they live, grow, reproduce, and spread. Perfect for the boat or tackle box.



BROCH-1B



BROCH-2



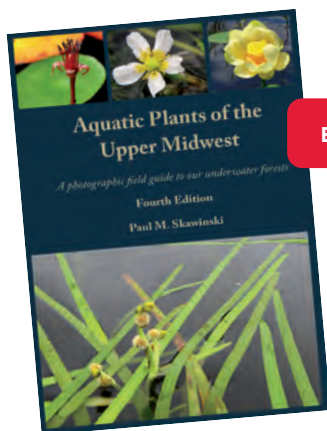
BROCH-3



BROCH-4

PROTECT OUR WATERS, WATERFOWL HABITAT AND WAKE BROCHURES

Brochures for outdoor enthusiasts and sportsmen help educate and identify harmful invasive species and provide critical information to Clean Drain Dry. STATE SPECIFIC



BOOK-2

AQUATIC PLANTS OF THE UPPER MIDWEST

By Paul M. Skawinski

This field guide features over 500 color photos of aquatic plants from Minnesota, Wisconsin, and Michigan. With its easy to use layout and magnified photos, this guide is an excellent resource for botanists, water resource managers, citizen scientists, and anyone with an interest in aquatic plants.

WATERCRAFT INSPECTOR MATERIALS



HAT

Cotton twill cap with pre-formed visor. Great for wearing outdoors in a variety of weather conditions.

SAFETY VEST

Neon yellow safety vest with reflective stripes, made of durable polyester. Design fits easily over clothing. Size XL.



T-SHIRT

Heavyweight short-sleeved t-shirt.



SAFETY SIGNS

25" x 12" folding signs made of durable plastic.



FLOOR MAT

Quality 3' x 4' mat with strong rubber backing for high traffic.

SAFETY CONES

28" cone with cleated back base. Injection-molded to withstand extreme weather and impact from vehicles.



BOAT RAMP TATTOO

63 mil thick polyethylene stencil. Does not absorb paint.

Multiple sizes available.



AIS PREVENTION TOOLS

Where are the Tools!

EMPOWER THE PUBLIC BEHAVIOR CHANGE

The lack of tools is one of the most commonly reported reasons that outdoor recreationists do not properly Clean.Drain.Dry. their equipment.



BAIT BAG

BAIT BAG

18" x 13" reusable, plastic bait bag with Trash Unused Bait messaging.



PLUGDOCK-1,-2

PLUGDOCK PACK

Pull the Plug! Insert boat plug into 1" or 1/2" PlugDock™ with safety lanyard for quick reminder to insert plug prior to launch. 3M adhesive allows for easy placement. Packaged with an instruction card and decal.



BRUSH-1

BOAT/BOOT BRUSH

Heavy duty scrub brush with 20" handle for hard to reach places.



TOWEL-2

SHAMMY TOWEL

Super absorbant 16"x10.5" felt shammy towel.



FLASHLIGHT

INSPECTOR FLASHLIGHT

A zoomable LED that puts out a 300 lumen beam. Uses one AA alkaline battery, included with purchase. Higher quality item great for contest prizes.



TOWEL-1

CLEAN DRAIN DRY RALLY TOWEL

14" x 15" 100% cotton towel.



SPONGE

SPONGE

Three-inch thick, highly-absorbant peanut-sponge.



PLUGWRENCH

PLUG WRENCH

Designed to fit multiple styles of drain plugs. Won't nick or scratch boats or plugs.



BRUSH-2

36" BOAT BRUSH

Heavy duty scrub brush with 36" handle for hard to reach places.



GRABBER

GRABBER TOOL

Gives the user the ability to remove weeds and debris from their boat in hard-to-reach places.



AWS

AQUA WEED STICK

Multi-tool: scrape, pull, cut weeds, algae, and mussels from boats and trailers. Optional Trailer mount available for convenient storage.



AWS TRAILER MOUNT (OPTIONAL)



CLEANING STATIONS

CD³ Roadside Clean In - Clean Out Station

PROVIDE CUSTOMIZABLE TOOLS AND PROMPTS 24/7

Rugged user-operated waterless cleaning station for permanent placement at boat access or mobile units available.

MULTIFUNCTIONAL DESIGN

- Completely customizable tools, signage and optional boot brush make this cleaning station perfect for any location.

TOOL OPTIONS

- Grabber Tool
- Boat Brush - 20" or 36"
- Aqua Weed Stick - 4ft, 2-4ft, or 3-6ft
- Plug Wrench
- Boot Brush

CUSTOMIZABLE TOOLS AND SIGNAGE AVAILABLE

Purchase includes a 15"x18" sign that can be customized to different target audiences.



OR

Build Your Own

AFIX TO CURRENT INFRASTRUCTURE

- Buildings
- Signage
- Wood or Steel Posts
- Educational Kiosks

AVAILABLE COMPONENTS

- Retractable Reels
- Bait Disposal Can
- Tool usage counters
- All components come with installation instructions

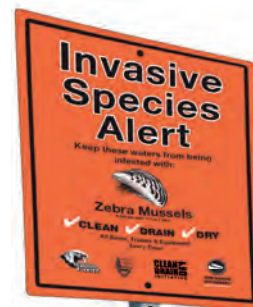
CUSTOMIZATION

- Placement
- Graphics
- Tethered Tools

SECURITY
Confidently tether tools to looped steel cable



RETRACTABLE REEL(S)



SIGNAGE

STEEL OR WOOD POST

BAIT DISPOSAL



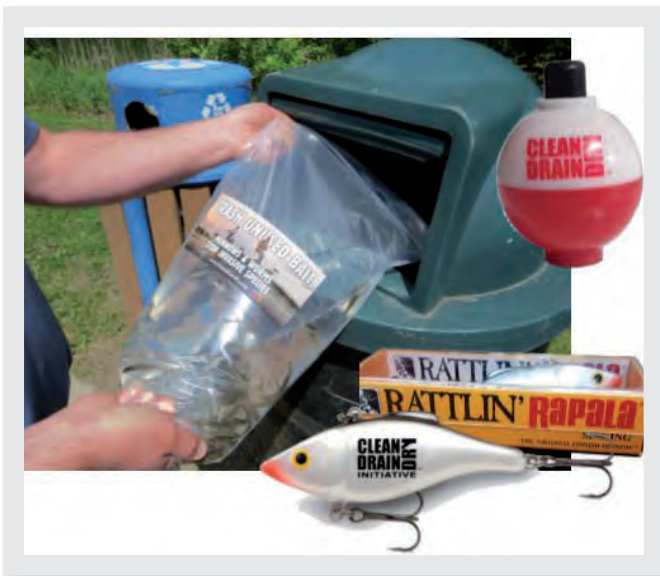
CLEAN.DRAIN.DRY. KITS

Not Sure What to Order?

Try one of our ready made kits

OUTREACH KIT

- This all-in-one kit contains some of our most popular products. Perfect for inspectors to use at the ramp to engage users.
- Contains:
 - 300 Protect Your Waters Brochures
 - 100 Call to Action Decals
 - 50 Key Floats
 - 100 Angler Decals
 - 100 Bobber Decals
 - Shipping Included



ANGLER KIT

- Perfect for engaging anglers of all ages at events or at the ramp. This kit offers our angler specific outreach materials
- Contains
 - 50 Bait Bags
 - 100 Bobbers
 - 24 Rapala Lures
 - Shipping Included

COMMUNITY KIT

- Incorporate Clean Drain Dry into the community, this kit contains materials for local gas-stations, bait shops, visitor centers, bars and restaurants
- Contains
 - 300 Protect Your Waters Brochures
 - 8 Posters, designs vary
 - 400 Coasters, designs vary
 - Shipping Included



DISPLAY & EVENT MATERIALS

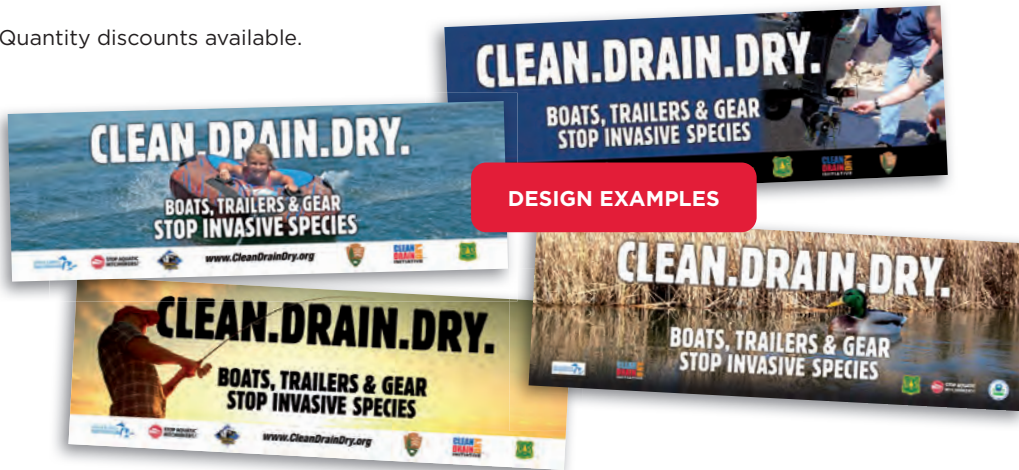
Full Color Vinyl Banners

MULTI-USE BANNERS

2' X 6' vinyl banners with metal grommets are made with all weather material and are built to last.

Customization for lake associations, retailers and community groups is available.

Quantity discounts available.



DESIGN EXAMPLES



3 DESIGN OPTIONS

RETRACTABLE BANNER
Portable and lightweight vinyl banner with retractable display. Measures 83" x 32". Design available for a variety of species.

Full Color Posters

LARGE POSTERS

Posters are ideal for display in retail outlets, bars and restaurants, bait shops and public facilities.



POSTER-1



POSTER-3

POSTER-4



POSTER-2

LAMINATED POSTERS
Full color, 11" x 17" laminated posters.



POSTER-5

DISPLAY & EVENT MATERIALS

Outdoor Metal Boat Ramp Signs

Constructed using commercial grade aluminum and painted with a weather-resitant finish, signs are available with species-specific or multi-species message.



Signs are also available with a variety of photo graphics and call to action messaging.

Full Color Yard Signs



YARD SIGN-1

ALL-WEATHER YARD SIGN

Constructed using rugged corrugated plastic with weather-resistant, full color graphics, signs are available for lake associations, retailers and community groups.



TD-2

TEAR DROP BANNER

Sturdy and attractive tear drop shaped banner stand sets up and folds easily and is ideal for both outdoor and indoor use. The banner is ideal for events, boat inspection areas and community outreach.

Events



EVENT TENT

Easy to use tent with canopy made from water-resistant polyester.



A-FRAME SIGN

A-FRAME SIDEWALK SIGN

Two-sided, 45" x 28" folding sign.

PRINT & DIGITAL ADVERTISING

Print Advertising Design

Print ads are a great way to deliver Clean Drain Dry prevention into the hands of recreational users. Ads for magazines, newspapers and newsletters can be customized for lake associations and retail partners for community outreach. Ask us for placement, design and vendor discounts.

Design and media purchasing available.

Contact for details or inquiries.



Digital Ads & Streaming

Digital website ads and banner designs can be customized and posted on web sites to help spread the message and support the Clean Drain Dry Campaign.

Streaming services can be used to target key audiences based on geographic location and interests. Choose from a variety of media platforms.

Contact us for details or inquiries.

DIGITAL/WEB/MOBILE DEVICE ADS (GEO-FENCING)

Pop-up ads are a new tool to grab attention and complement outreach efforts. Geo-fencing utilizes GPS to trigger mobile devices so when the device enters (or exits) specified boundaries, a text message or email alert is sent in the form of a pop-up ad or public service announcement.

Contact us on how we can help source Geo-fencing campaigns and create additional partner savings.



STOP AQUATIC HITCHHIKERS



TD-1

TEAR DROP BANNER

Sturdy and attractive tear drop shaped banner stand sets up and folds easily and is ideal for both outdoor and indoor use. The banner is ideal for events, boat inspection areas and community outreach.



BUTTON-2

BUTTON

2 inch, high-quality metal button perfect for handouts.



DESIGN OPTIONS



SAH! BANNERS

2'x6' Multi-use, full color vinyl banners with metal grommets are made to last through any weather.



SAH! PIN

PIN

.75 inch, bobber-shaped pin with sturdy butterfly clutch. Share the prevention message on your lapel, vest, or backpack.



SAH! HAT

HAT

Cotton twill cap with pre-formed visor. Great for wearing outdoors in a variety of weather conditions.



SAH RAMP SIGN

Made with heavy-duty aluminum and a weather-resistant finish, the Stop Aquatic Hitchhikers Ramp sign reminds users to take action at the boat ramp.



DECAL-2

DECAL-1



DECAL-4

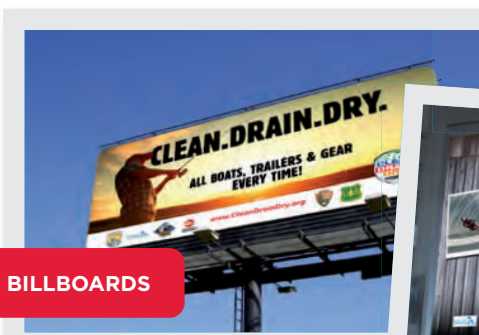


DECAL-3

SAH! DECALS

Stop Aquatic Hitchhiker decals make great handouts to engage users at the access and stick on equipment.

LARGE FORMAT



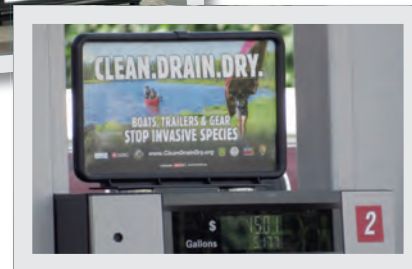
BILLBOARDS



AIRPORT DIORAMAS



TRANSIT MEDIA



GAS PUMP TOPPER

Gas pump toppers and restroom ads are a great tool to reinforce Clean Drain Dry prevention.

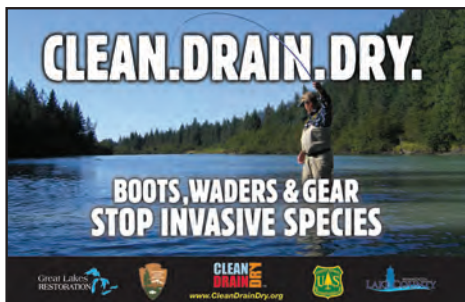
Outdoor Media

Highway billboards send a big message and can be customized for lake associations, retail partners and community groups. Predesigned with a consistent look and messaging that feature a variety of recreational activities appealing to a wide range of audiences and regions.

Additional design and media purchasing available upon request.

Target Audiences

[SEE ALL DESIGNS](#)



FLY ANGER



BIG LAKE



PIER FISHING



PONTOON



ANGLER



PRO FISHING



KAYAKING



WAKE SKIER



CANOE



WATERFOWL HUNTER



TUBER



DRY DOCK



BOBBER



WAKEBOARD

ABOUT WILDLIFE FOREVER®

Our mission is to conserve America's wildlife heritage through conservation education, preservation of habitat and management of fish and wildlife. Wildlife Forever is a 501c3 non-profit dedicated to investing resources on the ground.

Learn more at WildlifeForever.org.



PARTNERSHIP FUNDING

Wildlife Forever remains diligent in writing and securing grant dollars to help local communities. If you have an idea, or need assistance with grant management, we are here to help.

For more information, product quotes or outreach services information, visit:

www.CleanDrainDry.org

Or contact us at: info@WildlifeForever.org

Wildlife Forever

Clean Drain Dry Initiative
5350 Hwy. 61 N., Suite 7
White Bear Lake, MN 55110
763-253-0222

www.WildlifeForever.org



CLEAN.DRAIN.DRY.

PRICE LIST AND ORDER FORM

		PRICE	QUANTITY	COST
OUTREACH MATERIALS				
BOBBER	Bobbers			
BOTTLE-1	Water Bottle			
BUTTON	Button			
CAN-1	Collapsible Can Coozie			
COASTER	Bar Coaster			
COASTER	Bar Coaster			
COASTER	Bar Coaster			
DECAL-A	Call to Action Decal			
DECAL-B	Full Color, 4" x 3" Decal: Angler			
DECAL-C	Full Color, 4" x 3" Decal: Bobber			
DECAL-D	Window Tattoo, 8" x 8": Angler			
DECAL-E	Window Tattoo, 8" x 8": Bobber			
DECAL-F	Window Tattoo, 8" x 8": Tuber			
DECAL-G	Trash Unused Bait Decal			
DECAL-H	I Will Clean.Drain.Dry. Decal			
FLY SWATTER	Fly Swatter			
KEYCHAIN-1	Key Float			
KEYCHAIN-2	Flashlight Keychain			
LICENSE	Fishing License Holder			
LURE	Rattlin' Rapala			
PEN-1	Pen			
PLACEMAT-1	Paper Restaurant Placemat (minimum 50)			
STRING BAG	Draw String Bag			
RULER	36"x1" Fish Ruler Decal			
EDUCATIONAL MATERIALS				
BOOK-1	Invaders of the Great Lakes			
BOOK-2	Aquatic Plants of the Upper Midwest			
BROCH-1a	Protect Minnesota's Waters Brochure			
BROCH-1b	Protect Our Waters Brochure			
BROCH-2	Waterfowl Brochure			
BROCH-3	Wake Sports Brochure			
BROCH-4	CD3 Station Operating Instructions			
DVD-1	Defending Favorite Places DVD			
DVD-2	Playing Smart Against Invasive Species DVD			
DVD-3	Silent Invaders DVD			
WATCH CARDS	Invasive Species Watch Cards			
WATCH CARDS	Invasive Species Watch Cards			
WATCH CARDS	Invasive Species Watch Cards			
WATCH CARDS	Invasive Species Watch Cards			
WATERCRAFT INSPECTOR MATERIALS				
CONES	Safety Cones			
HAT	Baseball Hat			
MAT	Full Color, 3' x 4' Floor Mat			
SAFETY SIGN	Safety Sign			
BR TATTOO	5'x6' Boat Ramp Tattoo			
T-SHIRT	T-Shirt (call or email sizes)			
VEST	Reflective Safety Vest			

CLEAN.DRAIN.DRY.

PRICE LIST AND ORDER FORM

		PRICE	QUANTITY	COST
AIS PREVENTION TOOLS				
AWS-1	Aqua Weed Stick: 4 FT Standard			
AWS-2	Aqua Weed Stick: 2-4 FT Extendable			
AWS-3	Aqua Weed Stick: 3-6 FT Extendable			
AWS-4	Aqua Weed Stick Trailer Mount			
BAG	Bait Bags (minimum 50)			
BRUSH-1	20" Boat/Boot Brush			
BRUSH-2	36" Boat Brush			
FLASHLIGHT	Inspector Flashlight			
GRABBER	Grabber Tool			
PLUGDOCK-1	Plugdock Pack (for 1" rubber drain plugs)			
PLUGDOCK-2	Plugdock Pack (for 1/2" screw drain plugs)			
PLUGWRENCH	Plug Wrench			
SPONGE	Sponge			
TOWEL-1	Rally Towel			
TOWEL-2	Shammy Towel			
CLEANING STATIONS				
ROADSIDE	CD3 Roadside Clean in-Clean Out Station <i>Includes 2 reels, housing, and a 15" x 18" sign. Pick your tools:</i>			
AWS-2	Aqua Weed Stick: 2-4 FT Extendable			
AWS-3	Aqua Weed Stick: 3-6 FT			
AWS-1	Aqua Weed Stick: 4 FT Standard			
BRUSH-1	20" Boat/Boot Brush			
BRUSH-2	36" Boat Brush			
GRABBER	Grabber Tool			
PLUGWRENCH	Plug Wrench			
BOOTBRUSH	Boot Brush <i>For removal of terrestrial invasive species from footwear</i>			
STATION	Build Your Own Cleaning Station <i>Includes a 15" x 18" sign, post, and 1 reel. Pick your tools:</i>			
AWS-2	Aqua Weed Stick: 2-4 FT Extendable			
AWS-3	Aqua Weed Stick: 3-6 FT Extendable			
AWS-1	Aqua Weed Stick: 4 FT Standard			
BAIT	Bait Disposal			
BRUSH-1	20" Boat/Boot Brush			
BRUSH-2	36" Boat Brush			
GRABBER	Grabber Tool			
PLUGWRENCH	Plug Wrench			
REEL	Retractable Reel			
CLEAN.DRAIN.DRY. KITS				
KIT-1	Angler			
KIT-2	Outreach			
KIT-3	Community			

CLEAN.DRAIN.DRY.

PRICE LIST AND ORDER FORM

		PRICE	QUANTITY	COST
POSTERS AND SIGNAGE				
POSTER	Laminated, 11" x 17" Poster			
POSTER	Laminated, 11" x 17" Poster			
POSTER	Laminated, 11" x 17" Poster			
POSTER	Laminated, 11" x 17" Poster			
POSTER	Laminated, 11" x 17" Poster			
BOAT RAMP-1	Full Color, 12" x 18" Sign			
BOAT RAMP-1	Full Color, 12" x 18" Sign			
BOAT RAMP-1	Full Color, 12" x 18" Sign			
BOAT RAMP-2	Two # 18"x24" Alert! Sign			
BOAT RAMP-2	Two # 18"x24" Alert! Sign			
BOAT RAMP-3	Full Color, 48" x 48" Sign			
YARD SIGN-1	Full Color, 24" x 18" Yard Sign			
YARD SIGN-1	Full Color, 24" x 18" Yard Sign			
A-FRAME SIGN	A-Frame Sign			
A-FRAME SIGN	A-Frame Sign			
PUBLIC SERVICE ANNOUNCEMENTS				
PSA-1	General AIS Prevention			
PSA-2	Wake Sports			
PSA-3	Waterfowl Hunters			
PSA-4	Anglers			
PSA-5	Non-Motorized Watercraft			
PSA-6	Minnesota Watercraft Inspector			
PSA-7	Rapid Response Kit: Zebra Mussels			
PSA-8	Rapid Response Kit: New Zealand Mudsnaills			
PSA-9	Rapid Response Kit: Red Swamp Crayfish			
PSA-10	Rapid Response Kit: Eurasian Watermilfoil			
PSA-11	Rapid Response Kit: Invasive Carp			
PSA-12	Rapid Response Kit: Starry Stonewort			
PSA-CUSTOM	New or Customized PSA	Contact us for details		
STOPAQUATIC HITCHHIKERS				
BAN	2'x6' Vinyl Banner			
BUTTON-2	2" Stop Aquatic Hitchhiker Button			
DECAL-1	Full Color, 4"x3" Decal: Bobber			
DECAL-2	Full Color, 4"x3" Decal: Waterfowl			
DECAL-3	Full Color, 2"x3" Winchpost Decal			
DECAL-4	Full Color, 2"x10" Bumper Sticker			
HAT	Cotton Stop Aquatic Hitchhiker Ball Cap			
PIN	.75" Lapel Pin			
RAMP SIGN	11"x14" Stop Aquatic Hitchhiker Sign			
TD-1	7' Tear Drop Banner			

CLEAN.DRAIN.DRY.

PRICE LIST AND ORDER FORM

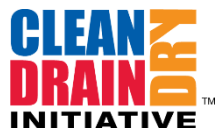
		PRICE	QUANTITY	COST
DISPLAY AND EVENT MATERIALS				
BAN	Full Color, 2' x 6' Vinyl Banner			
BAN	Full Color, 2' x 6' Vinyl Banner			
BAN	Full Color, 2' x 6' Vinyl Banner			
RET BAN	32"x83" Retractable Banner			
RET BAN	32"x83" Retractable Banner			
TD-2	7' Tear Drop Banner			
EVENT TENT	10'x10' Event Tent			
SUBTOTAL				
S&H	Shipping and Handling to be determined by Wildlife Forever			

PARTNER SHIPPING INFORMATION			
Affiliation:			
Contact Name:			
Address:			
City, State, ZIP:			
Phone:		Email:	
PARTNER BILLING INFORMATION			
Select one:	Check, Payable to Wildlife Forever		
	Credit Card – Please call with card information, or mail or fax this form		

There is a 3% processing fee on all credit card orders

All prices and product availability subject to change.
Custom products subject to increased pricing.

Contact Zach Burnside at zburnside@wildlifeforever.org for additional information



Wildlife Forever • 5350 Hwy 61 N, Ste 7 • White Bear Lake, MN 55110
Phone: 763-253-0222 • Fax: 763-560-9961 • Email: info@wildlifeforever.org

